

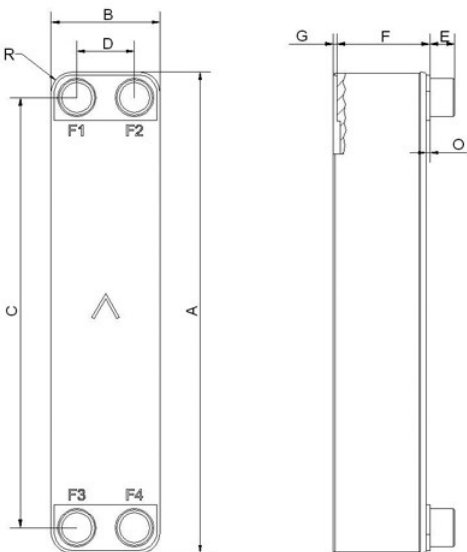


# SWEP P80AS

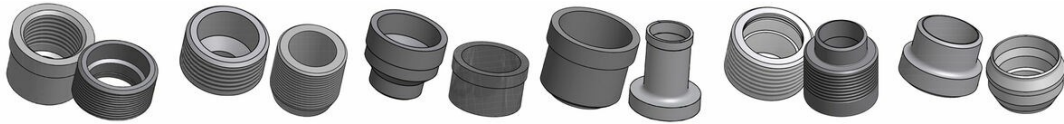
The P80AS is built on the successful 80 platform and adds the advantages of SWEP’s patented AsyMatrix® technology, offering increased thermal performance and reduced pressure drop. The P80AS is designed as a high-performance evaporator. The optimization significantly increases heat flux, saving energy and giving impressive efficiency gains for high-efficiency chiller and heat pump systems.



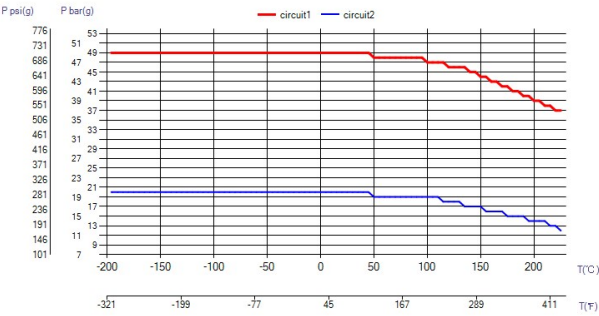
Maximum number of plates (NoP)	140
Max flow	17 m³/h (74.85 gpm)
Channel volume	0.1/0.122 dm³ (0.0035/0.0043 ft³)
Material	316/316L stainless steel plates, copper brazing
Weight excl. connections	2.09+(0.194*NoP) kg 4.61+(0.428*NoP) lb
Max Particle Size (mm)	1



#	MM	IN
A	526	20.71
B	119	4.69
C	470	18.5
D	63	2.48
F	4,00+2,24*(NoP)	0.16+0.09 *(NoP)
G	6	0.24
R	23	0.91
E_1	27	1.06
E_2	45	1.77



Threaded Connection   Threaded Ultra High Approved   Victaulic Connection   Solder Connection   Combo Connection   Weld Connection



UL Tryck/Temperatur

