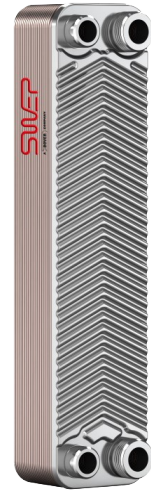
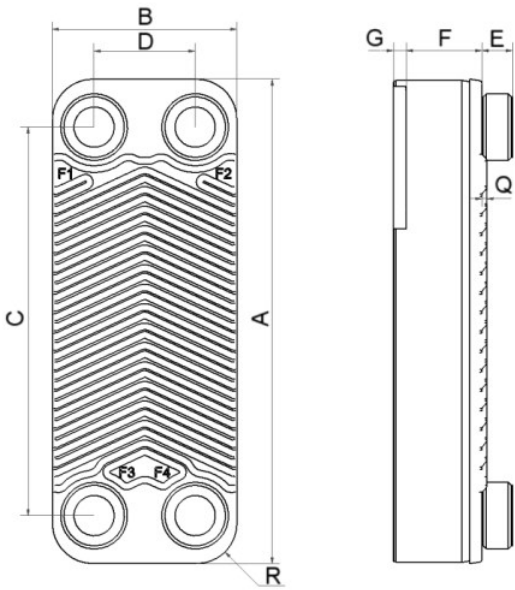


# SWEP E8T

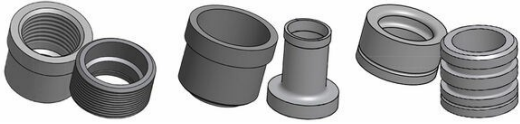
The versatile and very compact E8T delivers improved heat transfer for the majority of wall-hung, non-condensing boiler applications. The E8T has an All-Active plate pack with front and back plates that give mechanical stability while remaining active heat transfer plates. This enables the E8T to transfer more heat using less material.



<b>Maximum number of plates (NoP)</b>	40
<b>Max flow</b>	4 m³/h (17.61 gpm)
<b>Channel volume</b>	0.039/0.039 dm³ (0.0014/0.0014 ft³)
<b>Material</b>	316/316L stainless steel plates, copper brazing
<b>Weight excl. connections</b>	0.49+(0.075*NoP) kg 1.07+(0.165*NoP) lb
<b>Max Particle Size (mm)</b>	1



#	MM	IN
A	315	12.4
B	73	2.87
C	278	10.94
D	40	1.57
E_1	12	0.47
E_2	20	0.79
F	2+(2.24*(NoP-2))	0.08 (0.08*(NoP-0.08))
G	7	0.28
Q	2	0.08
R	16	0.63



Threaded Connection Solder Connection O-Ring Connection

