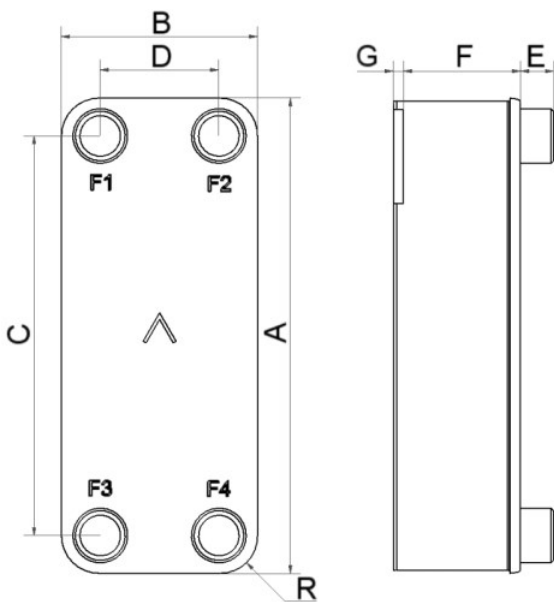


SWEP B25

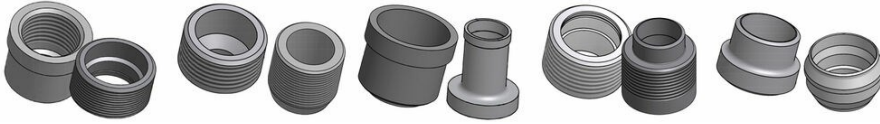
The B25 delivers efficient heat exchange solutions across a wide capacity interval, and is quick and simple to adapt for numerous applications. The product's versatility and excellent heat transfer make it an excellent choice for demanding cooling applications and as a condenser in two-phase applications.



Maximum number of plates (NoP)	140
Max flow	9 m³/h (39.63 gpm)
Channel volume	0.114/0.114 dm³ (0.0040/0.0040 ft³)
Material	316/316L stainless steel plates, copper brazing
Weight excl. connections	3.96+(0.234*NoP) kg 8.73+(0.516*NoP) lb
Max Particle Size (mm)	1



#	MM	IN
A	524	20.63
B	116	4.57
C	479	18.86
D	72	2.83
F	8,40+2,34*(NoP)	0.33+0.09 *(NoP)
G	4	0.16
R	22	0.87
E_1	20	0.79
E_2	45	1.77



Threaded Connection Threaded Ultra High Approved Solder Connection Combo Connection Weld Connection

