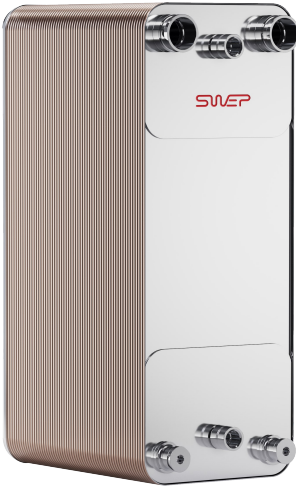


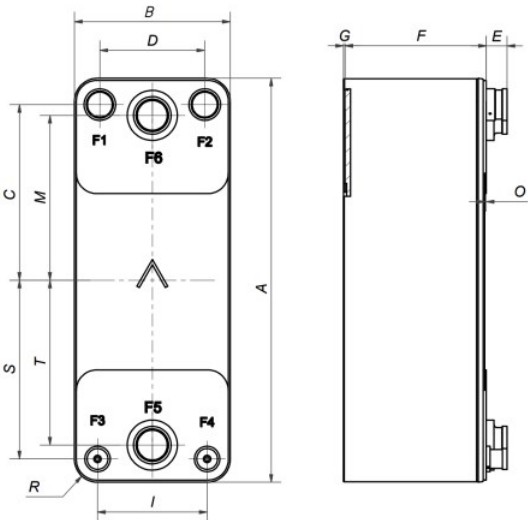
I

SWEP D190

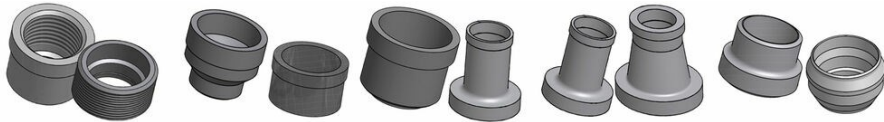
SWEP Brazed Plate Heat Exchanger D190 is a highly effective, versatile true dual that is a natural choice for two-phase applications. The advantage of D190 is its ability to offer full performance at both full and partial load. It is optimized for performance under extreme conditions by using environment friendly refrigerants, enabling our customers to use the compressor’s whole envelope. The innovative plate design makes D190 outstanding in efficient heat exchange in applications combining small flows and wide range of pressures.



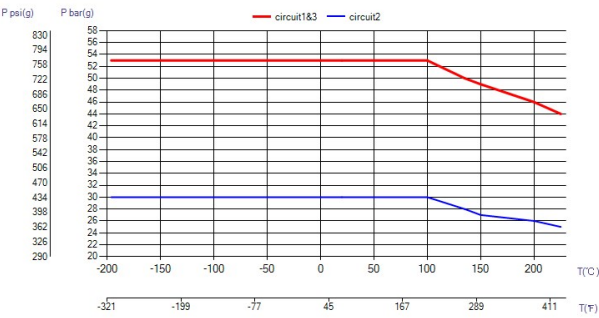
Maximum number of plates (NoP)	190
Max flow	47 m³/h (206.93 gpm)
Channel volume	0.1654/0.1955 dm³ (0.0058/0.0069 ft³)
Material	316 Stainless Steel Plates, Cover Plates in 304 Stainless Steel, Copper Brazing
Weight excl. connections	6.19+(0.285*NoP) kg 13.64+(0.628*NoP) lb
Max Particle Size (mm)	0.9



#	MM	IN
A	525	20.67
B	202	7.95
C	228	8.98
D	136	5.35
F	10,00+2,11*(NoP)	0.39+0.08 *(NoP)
G	2	0.08
I	142	5.59
M	214	8.43
O	2	0.08
R	30	1.18
S	232	9.13
T	214	8.43
E_1	27	1.06
E_2	54	2.13



Threaded Connection Victaulic Connection Solder Connection Solder Coned Connection Weld Connection



UL Tryck/Temperatur

