

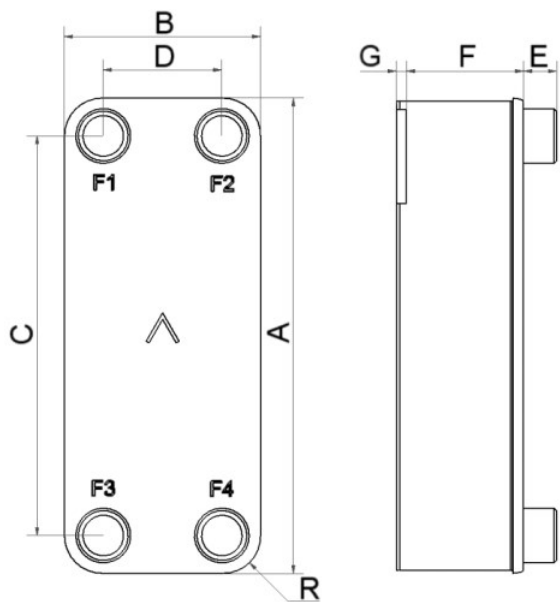


# SWEP BDW16DW

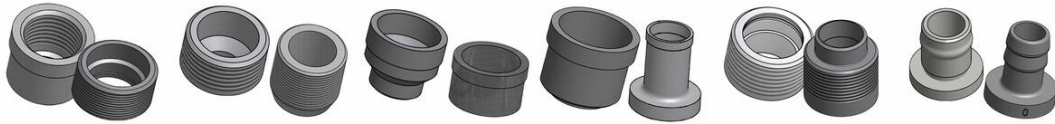
This double-wall product is designed for applications requiring high thermal efficiency, minimal leakage, and improved leak detection. The design offers the same compactness and thermal performance as other SWEP BPHEs.



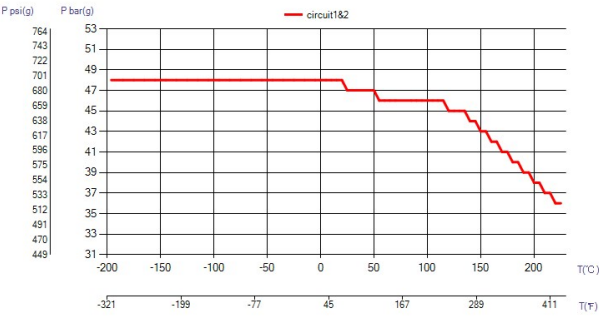
Maximum number of plates (NoP)	140
Max flow	11.3 m³/h (49.75 gpm)
Channel volume	0.061/0.061 dm³ (0.0022/0.0022 ft³)
Material	316/316L stainless steel plates, copper brazing
Weight excl. connections	1.55+(0.22*NoP) kg 3.42+(0.485*NoP) lb
Max Particle Size (mm)	0.8



#	MM	IN
A	377	14.84
B	119.50	4.7
C	329	12.95
D	72	2.83
F	4,00+2,01*(NoP)	0.16+0.08 *(NoP)
G	6	0.24
R	23.50	0.93
E_1	20	0.79



Threaded Connection   Threaded Ultra High Approved   Victaulic Connection   Solder Connection   Combo Connection   Hose Connection



### UL Tryck/Temperatur

