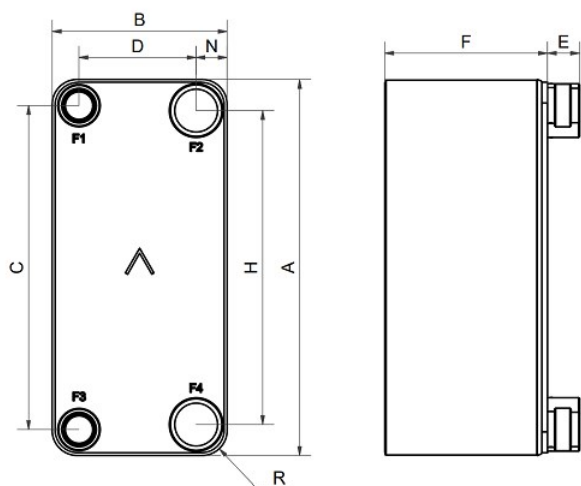


SWEP B285

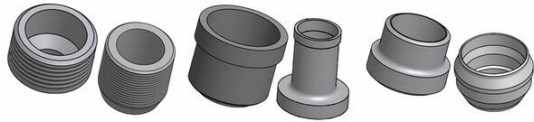
The demand for natural refrigerants, such as CO₂, is increasing. With pressure requirements for transcritical CO₂ applications touching 140 bar, the B285H is the natural choice. The B285H is optimized for high heat load capacities (up to 550 kW as a gas cooler, with flow capacity above 50 m³/h). The compact, yet lightweight, B285 is suitable for cold-chain applications, such as hypermarkets, supermarkets, and heat recovery. It also suitable for different heat pump applications.



Maximum number of plates (NoP)	126
Max flow	48.8 m ³ /h (214.86 gpm)
Channel volume	0.157/0.161 dm ³ (0.0055/0.0057 ft ³)
Material	316/316L stainless steel plates, copper brazing
Weight excl. connections	17.30+(0.75*NoP) kg 38.14+(1.653*NoP) lb
Max Particle Size (mm)	0.8



#	MM	IN
A	527.10	20.75
B	245.10	9.65
C	454	17.87
D	164	6.46
F	18,00+2,15*(NoP)	0.71+0.08 *(NoP)
G	0	0
H	440	17.32
J	6	0.24
K	35.60	1.4
N	43.50	1.71
R	35	1.38
E_1	45	1.77



Threaded Ultra High Approved Solder Connection Weld Connection

