

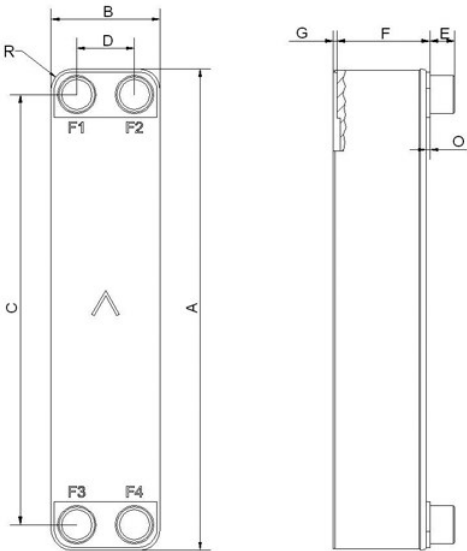


SWEP B80S- All Stainless

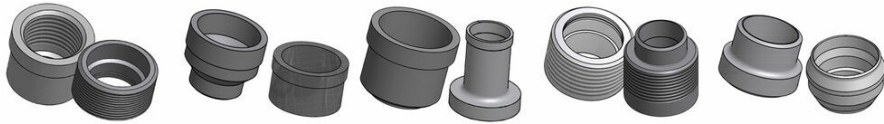
SWEP All-Stainless™ products are developed for systems demanding 100% stainless steel components, and for high temperature applications. They can be used with fluids that are corrosive to copper such as ammonia and biogas or for sensitive applications where copper and nickel contamination must be avoided such as oil, DI water and pharmaceutical applications. SWEP's unique process technology enables a compact product with minimal material usage relative to its mechanical strength. The B80S is our medium-size high-capacity model. It is the perfect choice for most types of low-capacity chiller applications and high-performance heat pumps and is a proven oil cooler for compressors and hydraulics.



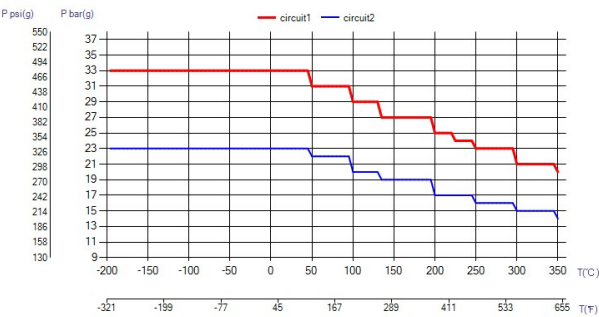
Maximum number of plates (NoP)	140
Max flow	17 m³/h (74.85 gpm)
Channel volume	0.107/0.107 dm³ (0.0038/0.0038 ft³)
Material	316 Stainless Steel Plates, Stainless Steel Brazing
Weight excl. connections	2.18+(0.231*NoP) kg 4.80+(0.509*NoP) lb
Max Particle Size (mm)	1



#	MM	IN
A	526	20.71
B	119	4.69
C	470	18.5
D	63	2.48
F	4,00+2,39*(NoP)	0.16+0.09 *(NoP)
G	6	0.24
R	23	0.91
E_1	27	1.06



Threaded Connection Victaulic Connection Solder Connection Combo Connection Weld Connection



UL Tryck/Temperatur

