

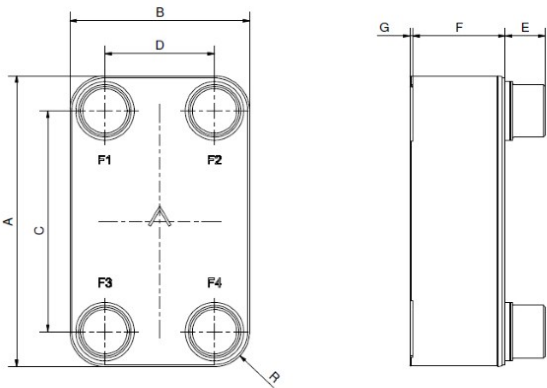
I

# SWEP B315

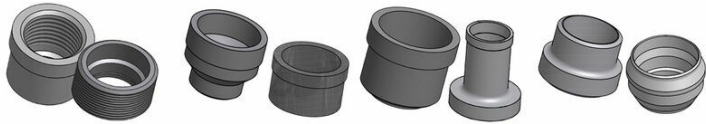
315 product is equipped with 3" ports in a compact envelope, based on open yet strong internal design, facilitating low pressure drop and high flow rates in a compact format also with full utilization of the plate area. A robust solution in stainless steel, which brings lifetime and quality advantages. Optimized for air dryer applications, heat recovery coming from chillers and various industrial applications, also suitable for oil-cooling at large temperature approaches.



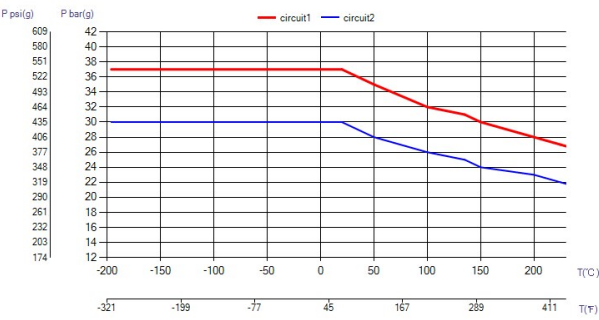
Maximum number of plates (NoP)	200
Max flow	76.2 m³/h (335.50 gpm)
Channel volume	0.22/0.22 dm³ (0.0078/0.0078 ft³)
Material	316/316L stainless steel plates, copper brazing
Weight excl. connections	6.98+(0.312*NoP) kg 15.39+(0.688*NoP) lb
Max Particle Size (mm)	1.2



#	MM	IN
A	392.50	15.45
B	242.50	9.55
C	298	11.73
D	148	5.83
F	10,00+2,86*(NoP)	0.39+0.11 *(NoP)
G	4	0.16
R	47	1.85
E_1	54	2.13
E_2	27	1.06



Threaded Connection    Victaulic Connection    Solder Connection    Weld Connection



### UL Tryck/Temperatur

