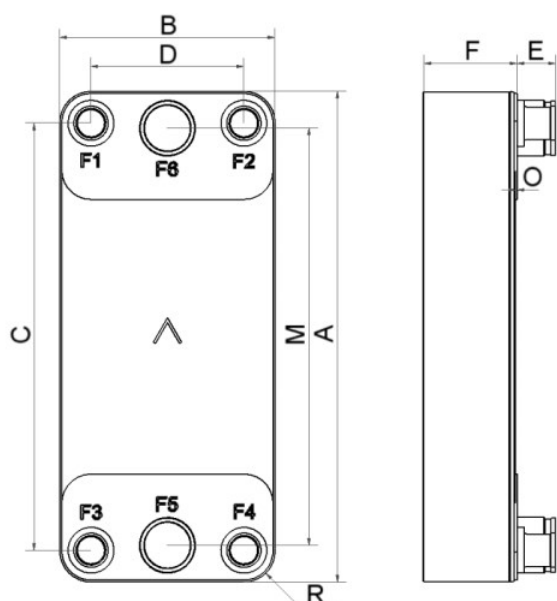


SWEP DBD500

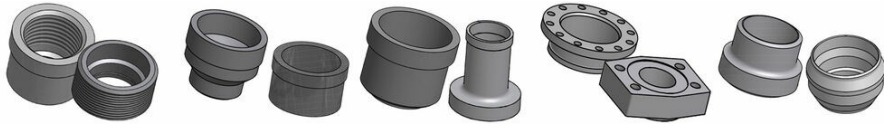
The DB500 is a highly effective, versatile True Dual condenser which is the perfect choice for applications such as flexible chillers, industrial heat pumps, and modular compact reversible chillers. Its advantage is its ability to deliver full performance at both full and half load.



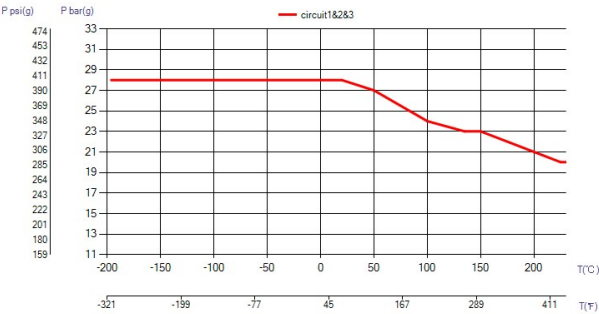
Maximum number of plates (NoP)	298
Max flow	83 m³/h (365.44 gpm)
Channel volume	0.539/0.547 dm³ (0.0190/0.0193 ft³)
Material	316/316L stainless steel plates, copper brazing
Weight excl. connections	12.00+(0.93*NoP) kg 26.45+(2.050*NoP) lb
Max Particle Size (mm)	1



#	MM	IN
A	980	38.58
B	304	11.97
C	866	34.09
D	191	7.52
F	12,00+2,29*(NoP)	0.47+0.09 *(NoP)
G	6	0.24
M	836	32.91
R	44	1.73
E_1	54	2.13
E_2	27	1.06



Threaded Connection Victaulic Connection Solder Connection Flange Connection Weld Connection



UL Tryck/Temperatur

