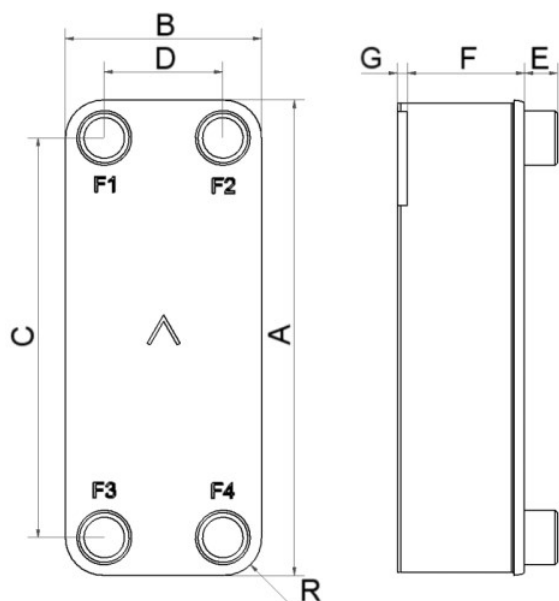


SWEP B427

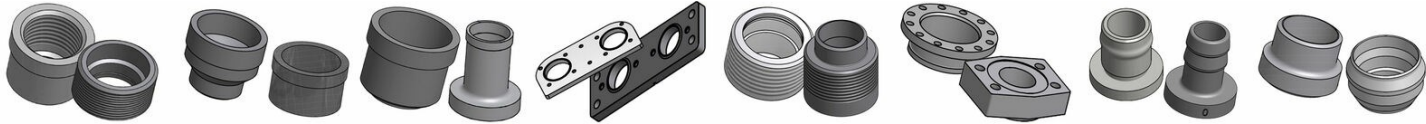
The efficient B427 has four different plate types, making it easy to adapt for a wide variety of heating and industrial applications. With 4" connections it handles up to 156 m³/h (686 gpm) water flow.



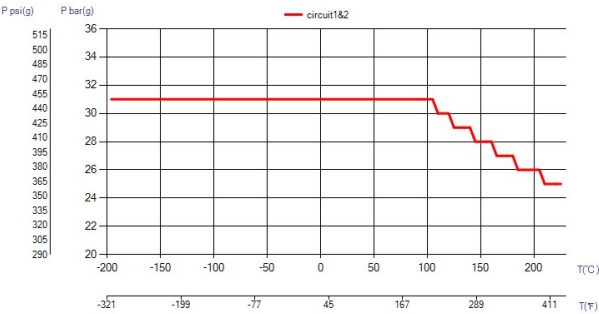
Maximum number of plates (NoP)	420
Max flow	155.5 m³/h (684.65 gpm)
Channel volume	0.405/0.405 dm³ (0.0143/0.0143 ft³)
Material	316/316L stainless steel plates, copper brazing
Weight excl. connections	21.89+(0.59*NoP) kg 48.26+(1.301*NoP) lb
Max Particle Size (mm)	1



#	MM	IN
A	694	27.32
B	304	11.97
C	567	22.32
D	179	7.05
F	22,00+2,29*(NoP)	0.87+0.09 *(NoP)
G	0	0
R	44	1.73
E_1	54	2.13
E_2	112	4.41
E_3	27	1.06



Threaded Connection Victaulic Connection Solder Connection Connection Plate Combo Connection Flange Connection Hose Connection Weld Connection



UL Tryck/Temperatur

