

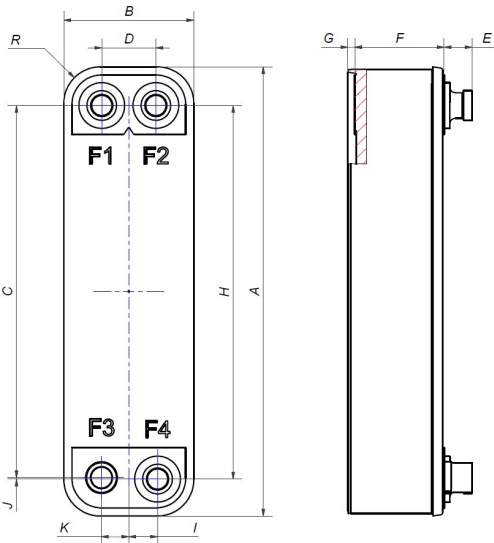
I

SWEP QD20

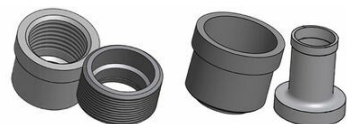
This ULTRA-COMPACT single circuit product is targeting minichiller and reversible Air-To-Water heat pumps. Large ports and innovative plate design enables an effective operating range up to 18 kW QD20 is delivering 30% less water pressure drop compared to similar products on the market SWEP's versatile H pressure products enable efficient heat exchange in applications requiring high pressures. It is optimized for high performance with the refrigerant R410A & R32.



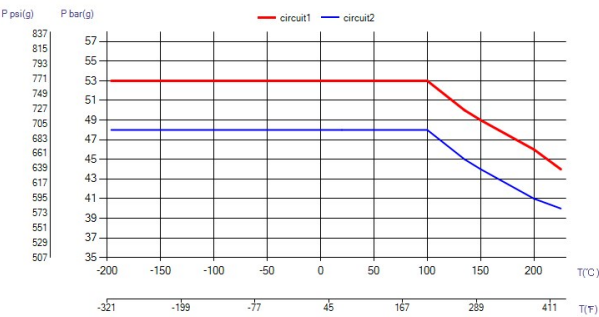
Maximum number of plates (NoP)	82
Max flow	9.7 m³/h (42.71 gpm)
Channel volume	0.0313/0.0301 dm³ (0.0011/0.0011 ft³)
Material	316 Stainless Steel Plates, Cover Plates in 304 Stainless Steel, Copper Brazing
Weight excl. connections	1.04+(0.0706*NoP) kg 2.30+(0.156*NoP) lb
Max Particle Size (mm)	0.6



#	MM	IN
A	324	12.76
B	94	3.7
C	268.20	10.56
D	39	1.54
F	6,00+1,46*(NoP)	0.24+0.06 *(NoP)
G	5	0.2
H	269.20	10.6
I	20.70	0.81
J	1	0.04
K	19.70	0.78
R	26	1.02
E_1	20	0.79



Threaded Connection Solder Connection



UL Tryck/Temperatur

