

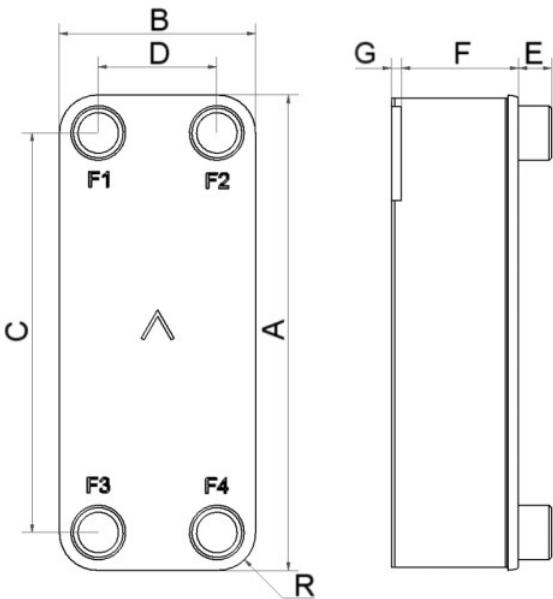


SWEP F85

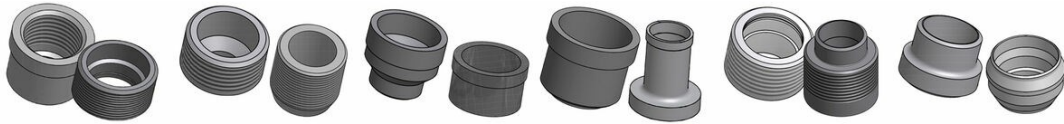
The F85 is a high-performance evaporator with higher efficiency than any comparable product. The F85 has an integrated distribution system developed for modern high-pressure refrigerants, making it the preferred choice for evaporators or reversible condensers targeting high system performance. The large connection size enables it to cope with high capacities.



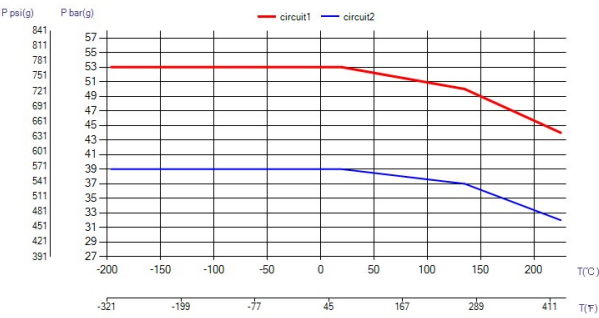
Maximum number of plates (NoP)	160
Max flow	17 m³/h (74.85 gpm)
Channel volume	0.094/0.094 dm³ (0.0033/0.0033 ft³)
Material	316/316L stainless steel plates, copper brazing
Weight excl. connections	2.09+(0.1492*NoP) kg 4.60+(0.329*NoP) lb
Max Particle Size (mm)	0.8



#	MM	IN
A	526	20.71
B	119	4.69
C	470	18.5
D	63	2.48
F	4,00+1,84*(NoP)	0.16+0.07 *(NoP)
G	6	0.24
R	23	0.91
E_1	27	1.06
E_2	45	1.77
E_3	20	0.79



Threaded Connection Threaded Ultra High Approved Victaulic Connection Solder Connection Combo Connection Weld Connection



UL Tryck/Temperatur

