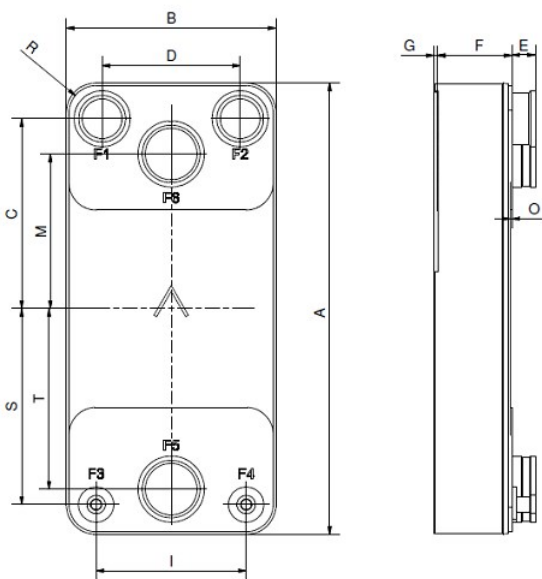


# SWEP DPD310

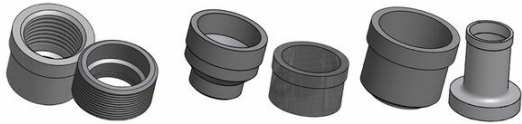
The DP310 is a highly effective, versatile true dual that is a natural choice for chillers and heat pump applications. Its advantage is its ability to offer full performance at both full and partial load. It is optimized for extreme performance with refrigerants. The product is approved for pressures of up to 49 bar (710 psi), so it can be used with the majority of current high-pressure refrigerants, enabling our customers to use the compressor’s whole envelope. SWEP’s versatile H pressure products enable efficient heat exchange in applications combining small flows and high pressures.



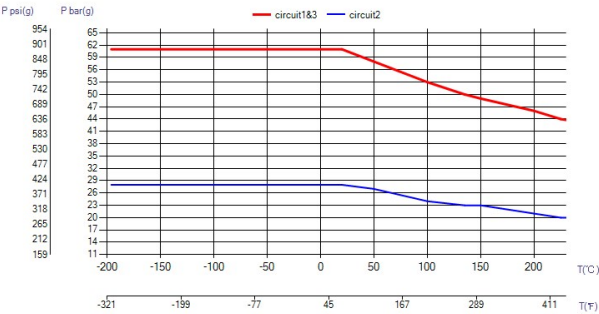
|                                |   |
|--------------------------------|---|
| Maximum number of plates (NoP) | 350   |
| Max flow                       | 60 m³/h (264.17 gpm)                            |
| Channel volume                 | 0.177/0.215 dm³ (0.0063/0.0076 ft³)             |
| Material                       | 316/316L stainless steel plates, copper brazing |
| Weight excl. connections       | 7.75+(0.342*NoP) kg<br>17.08+(0.754*NoP) lb     |
| Max Particle Size (mm)         | 0.8   |



| #   | MM               | IN               |
|-----|------------------|------------------|
| A   | 525              | 20.67            |
| B   | 243              | 9.57             |
| C   | 221              | 8.7              |
| D   | 160              | 6.3              |
| F   | 10,00+1,91*(NoP) | 0.39+0.08 *(NoP) |
| G   | 4                | 0.16             |
| I   | 174              | 6.85             |
| M   | 180              | 7.09             |
| O   | 2                | 0.08             |
| R   | 32               | 1.26             |
| S   | 228              | 8.98             |
| T   | 210              | 8.27             |
| E_1 | 27               | 1.06             |
| E_2 | 54               | 2.13             |



Threaded Connection    Victaulic Connection    Solder Connection



### UL Tryck/Temperatur

