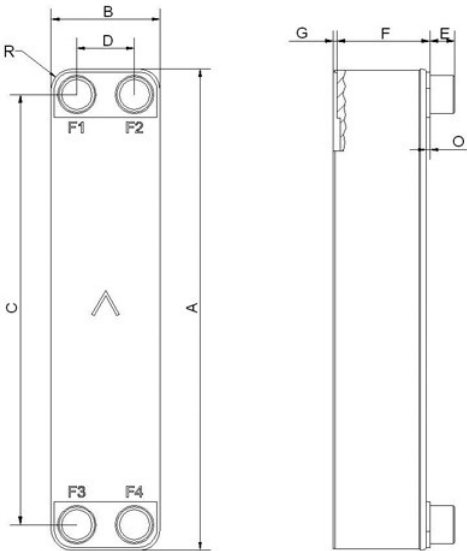


SWEP F80

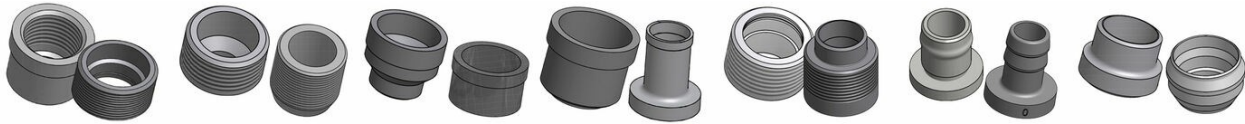
The F80 is designed as a high-performance evaporator using refrigerants. The optimization delivers a significant increase in heat flux, saving energy and giving impressive efficiency gains for high-efficiency chiller and heat pump systems.



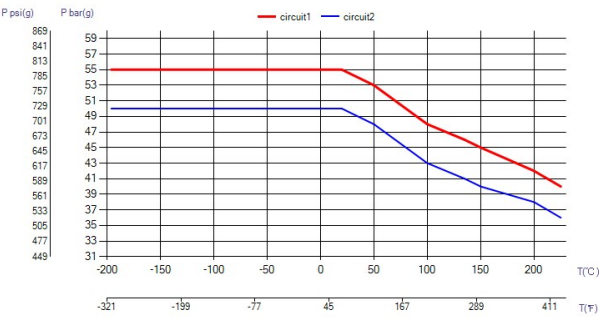
Maximum number of plates (NoP)	140
Max flow	16.9 m³/h (74.41 gpm)
Channel volume	0.107/0.107 dm³ (0.0038/0.0038 ft³)
Material	316/316L stainless steel plates, copper brazing
Weight excl. connections	2.09+(0.194*NoP) kg 4.61+(0.428*NoP) lb
Max Particle Size (mm)	1



#	MM	IN
A	526	20.71
B	119	4.69
C	470	18.5
D	63	2.48
F	4,00+2,24*(NoP)	0.16+0.09 *(NoP)
G	6	0.24
R	23	0.91
E_1	27	1.06
E_2	45	1.77



Threaded Connection Threaded Ultra High Approved Victaulic Connection Solder Connection Combo Connection Hose Connection Weld Connection



UL Tryck/Temperatur

