

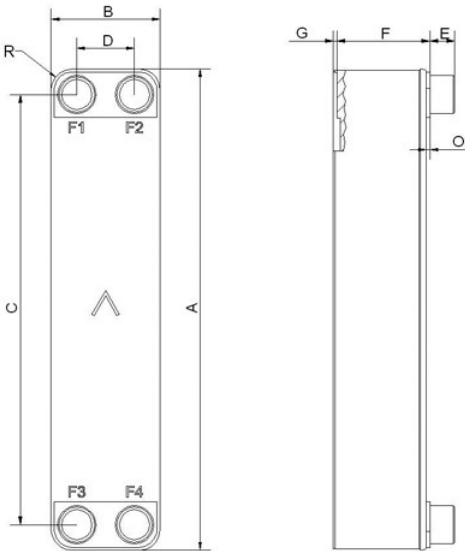


SWEP V80

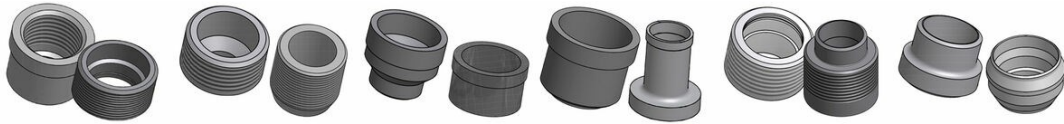
The V80 evaporator has been developed to perform effectively in a wide range of applications. It operates at very wide capacity intervals, making it the obvious choice for most types of evaporator applications.



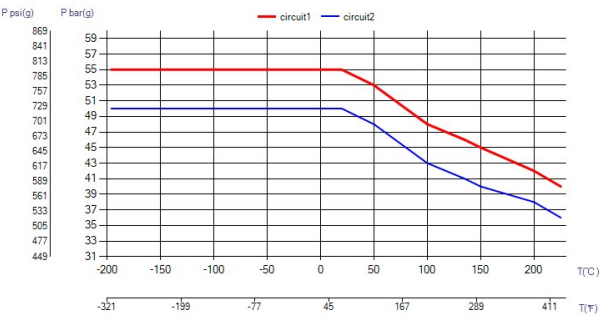
Maximum number of plates (NoP)	140
Max flow	16.9 m³/h (74.41 gpm)
Channel volume	0.107/0.107 dm³ (0.0038/0.0038 ft³)
Material	316/316L stainless steel plates, copper brazing
Weight excl. connections	2.09+(0.194*NoP) kg 4.61+(0.428*NoP) lb
Max Particle Size (mm)	1



#	MM	IN
A	526	20.71
B	119	4.69
C	470	18.5
D	63	2.48
F	4,00+2,24*(NoP)	0.16+0.09 *(NoP)
G	6	0.24
R	23	0.91
E_1	27	1.06
E_2	45	1.77



Threaded Connection Threaded Ultra High Approved Victaulic Connection Solder Connection Combo Connection Weld Connection



UL Tryck/Temperatur

