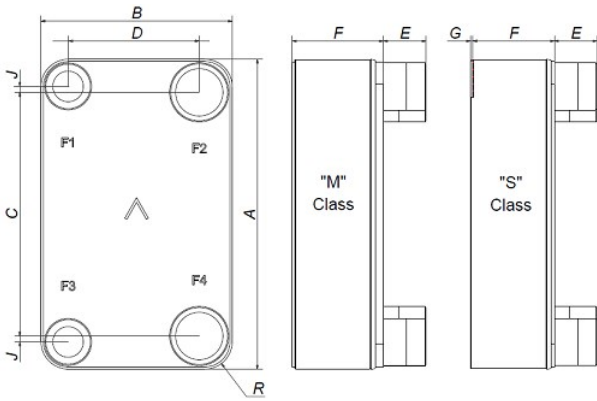


# SWEP B35T

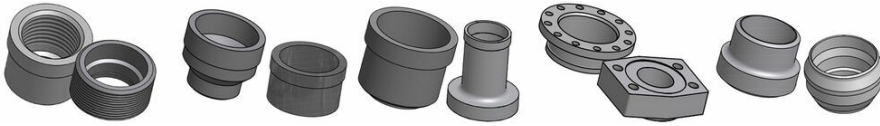
The B35T is ideal for many applications in district heating, heat recovery for industry, HVAC, combined heat & power and engine oil cooling. It is the perfect choice for efficient heat transfer with a low pressure drop in systems with up to 2½" piping and 58 m³/h (255 gpm) water flow.



<b>Maximum number of plates (NoP)</b>	260
<b>Max flow</b>	27 m³/h (118.88 gpm)
<b>Channel volume</b>	0.18/0.18 dm³ (0.0064/0.0064 ft³)
<b>Material</b>	316/316L stainless steel plates, copper brazing
<b>Weight excl. connections</b>	15.76+(0.256*NoP) kg 34.73+(0.564*NoP) lb
<b>Max Particle Size (mm)</b>	1



#	MM	IN
A	393	15.47
B	243	9.57
C	324	12.76
D	174	6.85
E_1	27	1.06
E_2	54	2.13
F	22+2.26*(NoP)	0.87+0.09 *(NoP)
G	0	0
R	35	1.38



Threaded Connection    Victaulic Connection    Solder Connection    Flange Connection    Weld Connection

