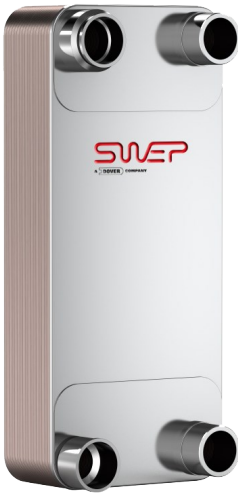


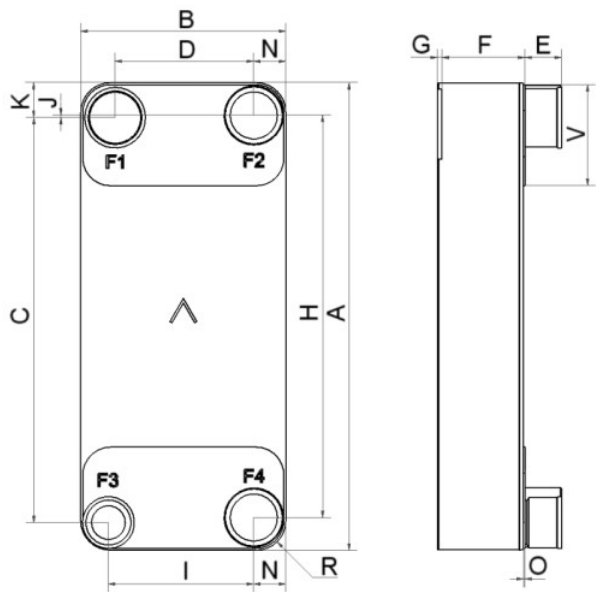
I

SWEP S400T

The S400T is part of our effective range of evaporators. It functions extremely effectively at high capacities and creates opportunities for compact solutions in demanding chiller applications.



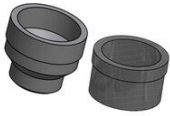
Maximum number of plates (NoP)	280
Max flow	83 m³/h (365.44 gpm)
Channel volume	0.403/0.403 dm³ (0.0142/0.0142 ft³)
Material	316/316L stainless steel plates, copper brazing
Weight excl. connections	15.43+(0.7*NoP) kg 34.02+(1.543*NoP) lb
Max Particle Size (mm)	1



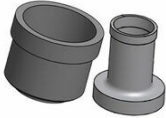
#	MM	IN
A	694	27.32
B	304	11.97
C	601	23.66
D	205.50	8.09
F	18,00+2,29*(NoP)	0.71+0.09 *(NoP)
G	0	0
H	597	23.5
I	215.50	8.48
J	3.50	0.14
K	52	2.05
N	47.50	1.87
O	2	0.08
R	44	1.73
V	150	5.91
E_1	54	2.13



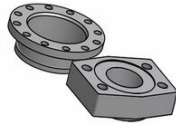
Threaded Connection



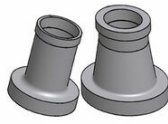
Victaulic Connection



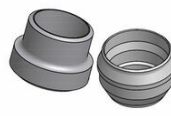
Solder Connection



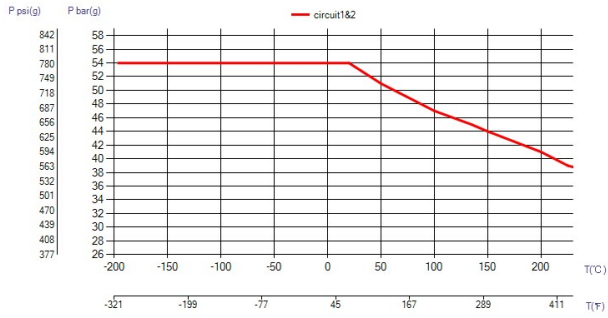
Flange Connection



Solder Coned Connection



Weld Connection



UL Tryck/Temperatur

