

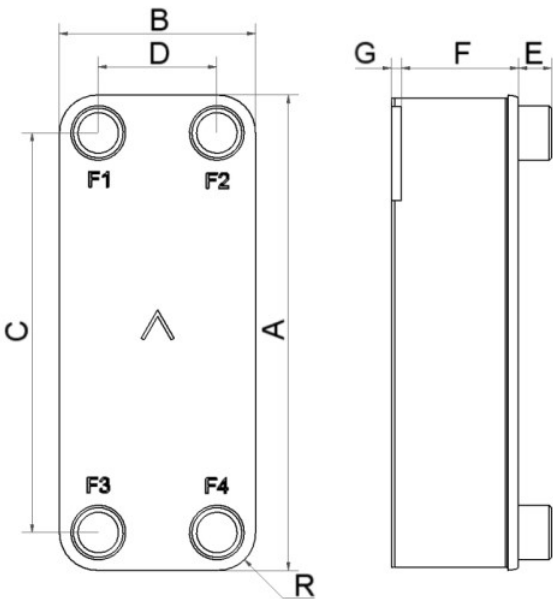


SWEP B85

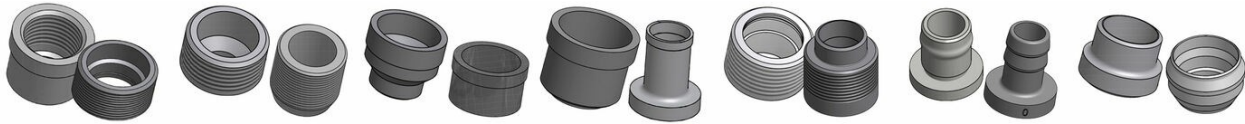
The B85 is a highly efficient heat exchanger with a higher thermal performance than any comparable product. The B85 is the perfect choice for high-performance condensers and demanding heat transfer requirements. The large ports enable it to cope with high capacities. A smaller pressing depth, compared with previous generations, makes the B85 more compact with a higher performance.



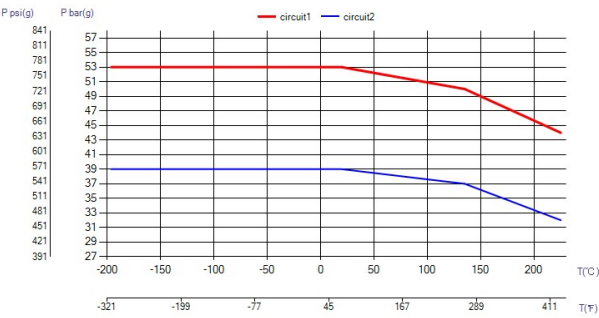
Maximum number of plates (NoP)	160
Max flow	17 m³/h (74.85 gpm)
Channel volume	0.094/0.094 dm³ (0.0033/0.0033 ft³)
Material	316/316L stainless steel plates, copper brazing
Weight excl. connections	2.09+(0.1367*NoP) kg 4.60+(0.301*NoP) lb
Max Particle Size (mm)	0.8



#	MM	IN
A	526	20.71
B	119	4.69
C	470	18.5
D	63	2.48
F	4,00+1,84*(NoP)	0.16+0.07 *(NoP)
G	6	0.24
R	23	0.91
E_1	27	1.06
E_2	45	1.77
E_3	20	0.79



Threaded Connection Threaded Ultra High Approved Victaulic Connection Solder Connection Combo Connection Hose Connection Weld Connection



UL Tryck/Temperatur

