

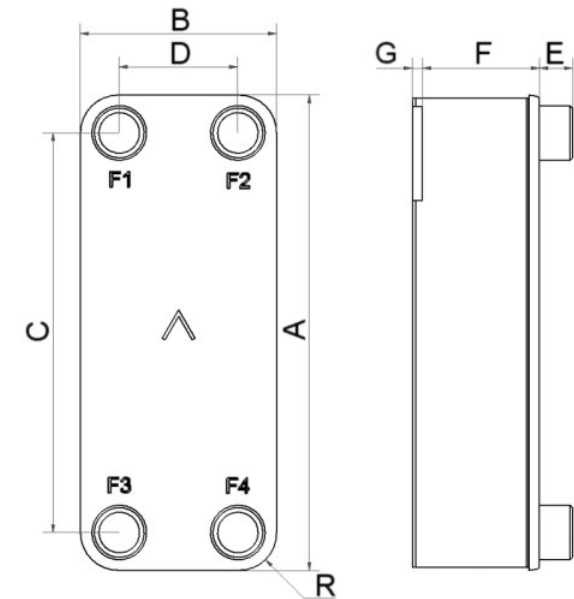
I

SWEP B439

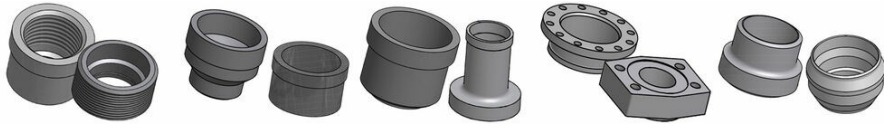
The efficient B439 is designed for high heat transfer. It has two plate types, which can also be used together, suitable for a wide range of heating, cooling, and industrial applications. With 4" connections it handles up to 156 m³/h (686 gpm) water flow.



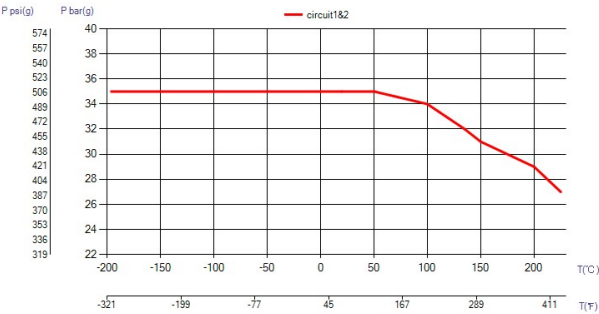
Maximum number of plates (NoP)	420
Max flow	155.5 m³/h (684.65 gpm)
Channel volume	0.573/0.573 dm³ (0.0202/0.0202 ft³)
Material	316/316L stainless steel plates, copper brazing
Weight excl. connections	15.73+(0.89*NoP) kg 34.68+(1.962*NoP) lb
Max Particle Size (mm)	1



#	MM	IN
A	979	38.54
B	304	11.97
C	854	33.62
D	179	7.05
F	12,00+2,29*(NoP)	0.47+0.09 *(NoP)
G	6	0.24
R	44	1.73
E_1	54	2.13



Threaded Connection Victaulic Connection Solder Connection Flange Connection Weld Connection



UL Tryck/Temperatur

