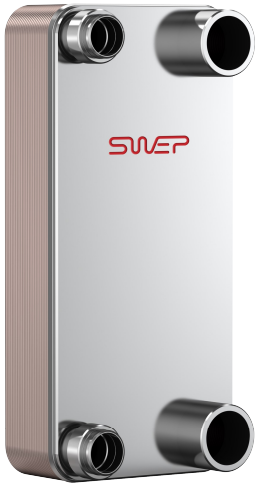
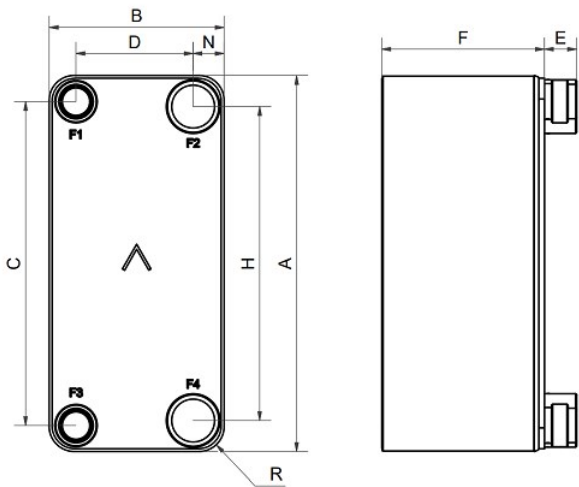


# SWEP B285

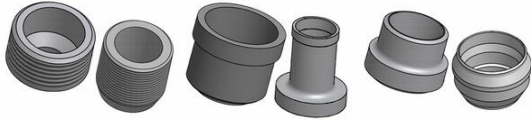
The demand for natural refrigerants, such as CO2, is increasing. With pressure requirements for transcritical CO2 applications touching 140 bar, the B285H is the natural choice. The B285H is optimized for high heat load capacities (up to 550 kW as a gas cooler, with flow capacity above 50 m3/h). The compact, yet lightweight, B285 is suitable for cold-chain applications, such as hypermarkets, supermarkets, and heat recovery. It also suitable for different heat pump applications.



Maximum number of plates (NoP)	126
Max flow	48.8 m³/h (214.86 gpm)
Channel volume	0.157/0.161 dm³ (0.0055/0.0057 ft³)
Material	316/316L stainless steel plates, copper brazing
Weight excl. connections	17.30+(0.75*NoP) kg 38.14+(1.653*NoP) lb
Max Particle Size (mm)	0.8



#	MM	IN
A	527.10	20.75
B	245.10	9.65
C	454	17.87
D	164	6.46
F	18,00+2,15*(NoP)	0.71+0.08 *(NoP)
G	0	0
H	440	17.32
J	6	0.24
K	35.60	1.4
N	43.50	1.71
R	35	1.38
E_1	45	1.77



Threaded Ultra High Approved      Solder Connection      Weld Connection

