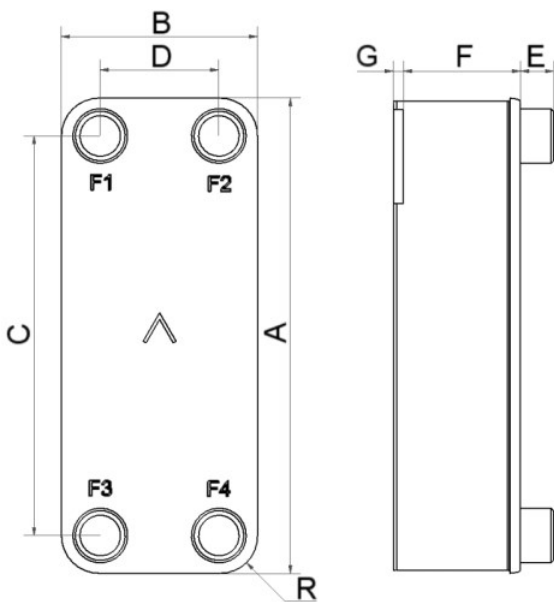


SWEP B220

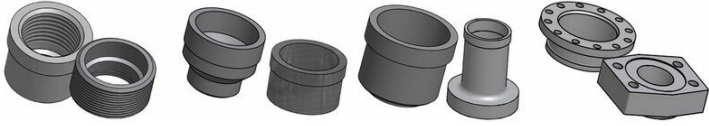
B220 is a compact but highly efficient Brazed Plate Heat Exchanger, which offers great heat transfer efficiency at a low cost. One main application is high efficiency tap water heating, but it can also be used in other single-phase applications such as oil cooling, space heating and desuperheaters. Thanks to its two-stack feature, the thermal length can be varied, and it is possible to get a tailored top performing product for each application.



Maximum number of plates (NoP)	300
Max flow	39 m ³ /h (171.71 gpm)
Channel volume	0.14/0.14 dm ³ (0.0049/0.0049 ft ³)
Material	316/316L stainless steel plates, copper brazing
Weight excl. connections	5.30+(0.321*NoP) kg 11.68+(0.708*NoP) lb
Max Particle Size (mm)	0.7



#	MM	IN
A	524	20.63
B	202	7.95
C	442	17.4
D	120	4.72
F	6,00+1,73*(NoP)	0.24+0.07 *(NoP)
G	4	0.16
R	41.60	1.64
E_1	54	2.13
E_2	27	1.06
E_3	30	1.18



Threaded Connection Victaulic Connection Solder Connection Flange Connection

