

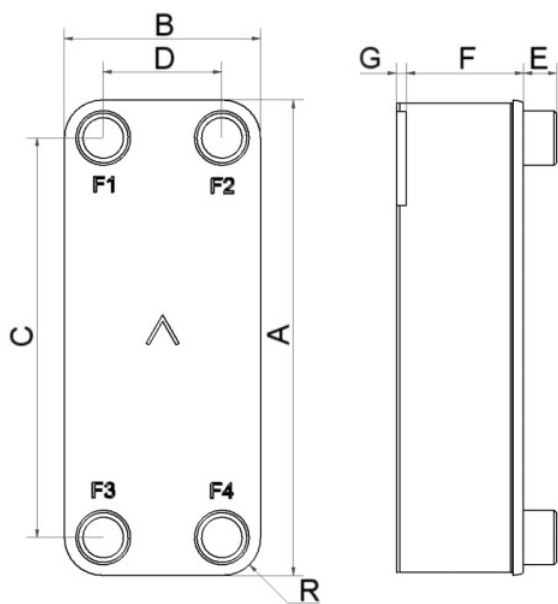
I

SWEP B320HT

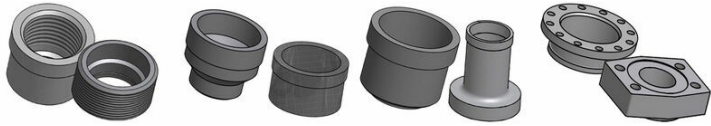
The B320HT envelope offers efficient solutions in many demanding applications, such as district heating, oil coolers and different industrial applications. This product is part of SWEPs range for larger capacities which offers a flexible thermal length through optimizing the plate arrangement which provides a great application fit combining high thermal efficiency and expanded capacity reach. The B320HT envelope is a drop-in replacement for SWEP current models B50H and B50M but more efficient.



Maximum number of plates (NoP)	300
Max flow	61.7 m³/h (271.66 gpm)
Channel volume	0.19/0.19 dm³ (0.0067/0.0067 ft³)
Material	316/316L stainless steel plates, copper brazing
Weight excl. connections	13.33+(0.389*NoP) kg 29.39+(0.858*NoP) lb
Max Particle Size (mm)	0.8



#	MM	IN
A	525	20.67
B	243	9.57
C	441	17.36
D	159	6.26
F	14,00+1,98*(NoP)	0.55+0.08 *(NoP)
G	2	0.08
R	35	1.38
E_1	54	2.13
E_2	20	0.79
E_3	30	1.18



Threaded Connection Victaulic Connection Solder Connection Flange Connection

