

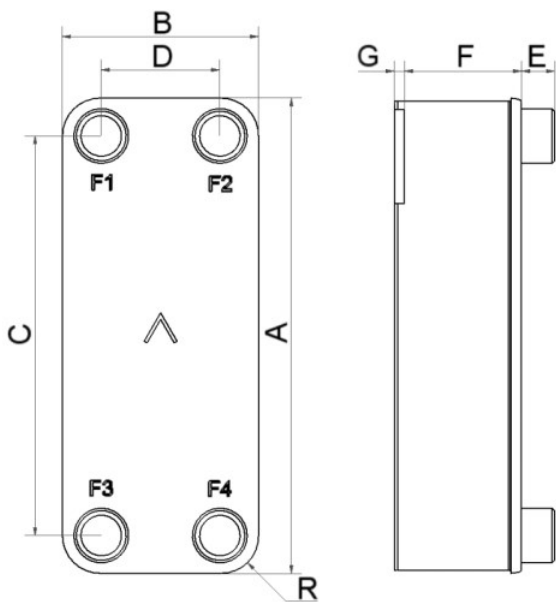


SWEP V25

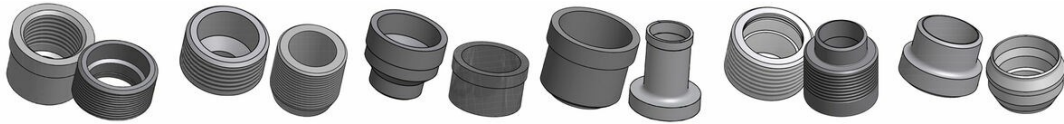
The V25 delivers efficient heat exchange solutions across a wide capacity interval, and is quick and simple to adapt for numerous applications. The product’s versatility and excellent heat transfer make it ideal for demanding cooling applications and as a reversible condenser and cascade in two-phase applications. The V-ring refrigerant distribution system ensures optimal performance as an evaporator in both counter- and co-current configurations and with larger plate packs.



Maximum number of plates (NoP)	140
Max flow	9 m³/h (39.63 gpm)
Channel volume	0.114/0.114 dm³ (0.0040/0.0040 ft³)
Material	316/316L stainless steel plates, copper brazing
Weight excl. connections	2.18+(0.254*NoP) kg 4.80+(0.560*NoP) lb
Max Particle Size (mm)	1



#	MM	IN
A	524	20.63
B	116	4.57
C	479	18.86
D	72	2.83
F	4,40+2,34*(NoP)	0.17+0.09 *(NoP)
G	6	0.24
R	22	0.87
E_1	20	0.79
E_2	45	1.77



Threaded Connection Threaded Ultra High Approved Victaulic Connection Solder Connection Combo Connection Weld Connection

