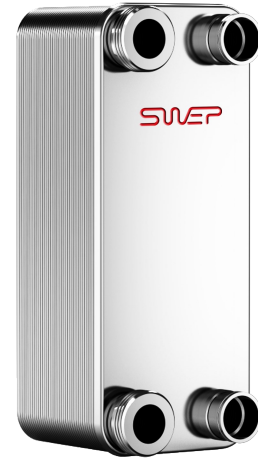
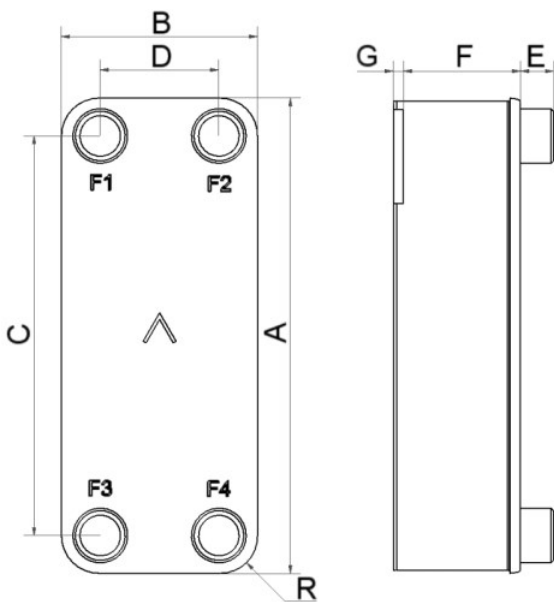


SWEP B10TS- All Stainless

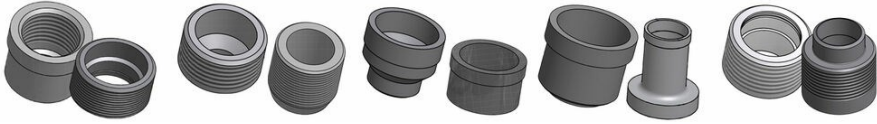
SWEP All-Stainless™ products are developed for systems demanding 100% stainless steel components, and for high temperature applications. They can be used with fluids that are corrosive to copper such as ammonia and biogas or for sensitive applications where copper and nickel contamination must be avoided such as oil, DI water and pharmaceutical applications. SWEP's unique process technology enables a compact product with minimal material usage relative to its mechanical strength. The B10TS delivers efficient heat exchange solutions across a wide capacity interval and is quick and simple to adapt for several applications. The product's compact size, versatility, and excellent heat transfer make it a perfect choice for both single-phase and refrigerant applications.



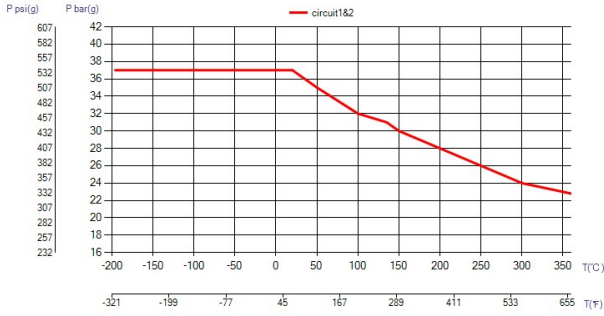
Maximum number of plates (NoP)	140
Max flow	9 m³/h (39.63 gpm)
Channel volume	0.061/0.061 dm³ (0.0022/0.0022 ft³)
Material	316 Stainless Steel Plates, Stainless Steel Brazing
Weight excl. connections	1.24+(0.121*NoP) kg 2.73+(0.267*NoP) lb
Max Particle Size (mm)	1



#	MM	IN
A	289	11.38
B	119	4.69
C	243	9.57
D	72	2.83
F	4,00+2,39*(NoP)	0.16+0.09 *(NoP)
G	6	0.24
R	23	0.91
E_1	20	0.79
E_2	27	1.06



Threaded Connection Threaded Ultra High Approved Victaulic Connection Solder Connection Combo Connection



UL Tryck/Temperatur

