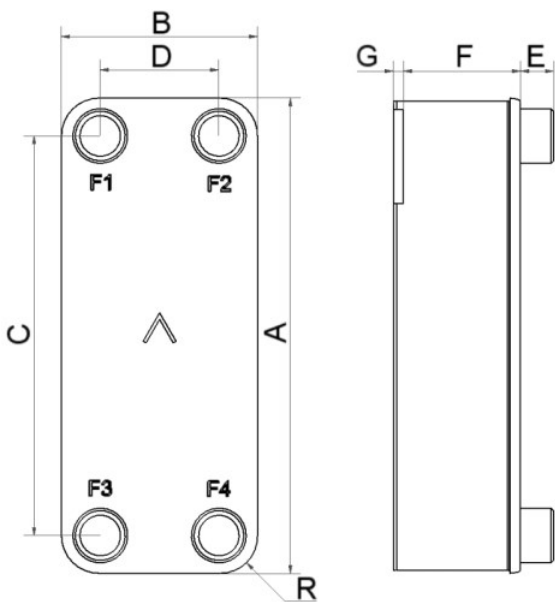


SWEP QN85

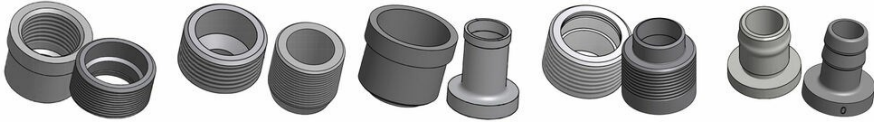
The QN85 is a highly efficient evaporator developed to meet the increasingly demanding requirements of efficient heat pumps. The fully integrated Q-pipe distribution system is optimized for high-efficiency heat pumps, and is the most efficient and versatile on the market. The QN85 is available in a wide range of plate numbers. Large ports enable it to handle high capacities.



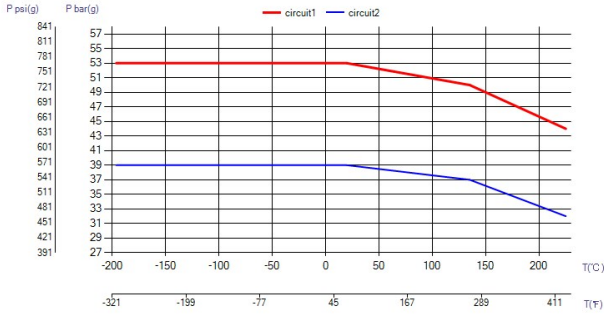
Maximum number of plates (NoP)	160
Max flow	17 m ³ /h (74.85 gpm)
Channel volume	0.094/0.094 dm ³ (0.0033/0.0033 ft ³)
Material	316/316L stainless steel plates, copper brazing
Weight excl. connections	2.10+(0.1427*NoP) kg 4.63+(0.315*NoP) lb
Max Particle Size (mm)	0.8



#	MM	IN
A	526	20.71
B	119	4.69
C	470	18.5
D	63	2.48
F	4,00+1,84*(NoP)	0.16+0.07 *(NoP)
G	6	0.24
R	23	0.91
E_1	27	1.06
E_2	45	1.77



Threaded Connection Threaded Ultra High Approved Solder Connection Combo Connection Hose Connection



UL Tryck/Temperatur

