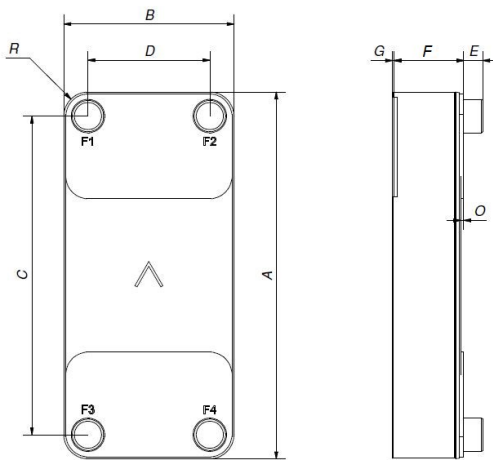


# SWEP B120T

The B120T has been specially developed to operate in demanding heating and industrial applications, typically water-water applications and oil coolers. The product has contributed to the rapid switch to BPHEs from traditional gasket plate heat exchangers and shell-and-tube solutions. It is widely used as a condenser in air conditioning and refrigeration.



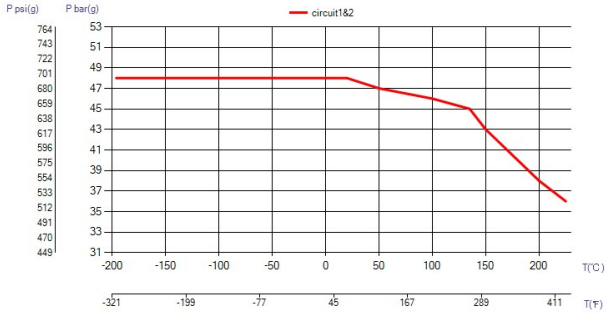
<b>Maximum number of plates (NoP)</b>	250
<b>Max flow</b>	27.4 m <sup>3</sup> /h (120.64 gpm)
<b>Channel volume</b>	0.241/0.241 dm <sup>3</sup> (0.0085/0.0085 ft <sup>3</sup> )
<b>Material</b>	316/316L stainless steel plates, copper brazing
<b>Weight excl. connections</b>	8.33+(0.404*NoP) kg 18.36+(0.891*NoP) lb
<b>Max Particle Size (mm)</b>	1



#	MM	IN
A	525	20.67
B	243	9.57
C	456	17.95
D	174	6.85
F	10,00+2,29*(NoP)	0.39+0.09 *(NoP)
G	4	0.16
R	35	1.38
E_1	27	1.06
E_2	54	2.13



Threaded Connection   Victaulic Connection   Solder Connection   Combo Connection   Flange Connection   O-Ring Connection   Weld Connection



## UL Tryck/Temperatur

