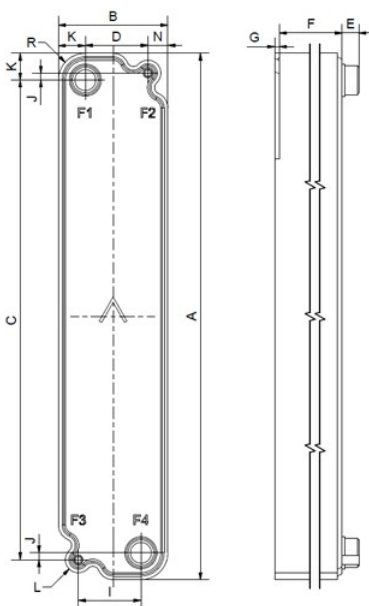


SWEP B9

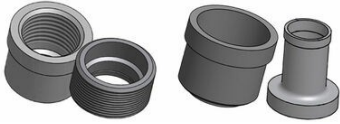
The B9 is an innovative product that sets new standards in heat exchanger technology. Based on our AsyMatrix® concept and pioneering plate technology, the B9 combines high-efficiency technology with excellent mechanical strength and reliability with a minimum of material input.



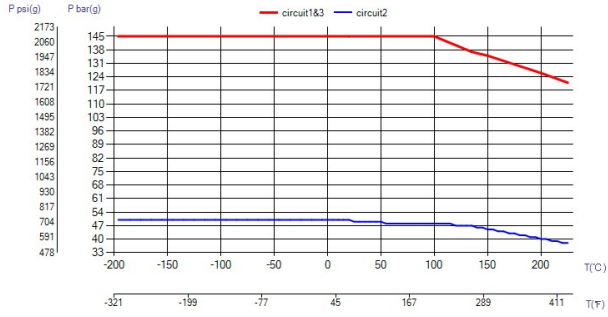
Maximum number of plates (NoP)	60
Max flow	2.5 m³/h (11.01 gpm)
Channel volume	0.0175/0.0231 dm³ (0.0006/0.0008 ft³)
Material	316/316L stainless steel plates, copper brazing
Weight excl. connections	0.50+(0.128*NoP) kg 1.10+(0.282*NoP) lb
Max Particle Size (mm)	0.4



#	MM	IN
A	378.70	14.91
B	78.70	3.1
C	345	13.58
D	45	1.77
F	2,00+1,29*(NoP)	0.08+0.05 *(NoP)
G	3.78	0.15
I	45	1.77
J	5	0.2
K	19.35	0.76
L	9.35	0.37
N	14.35	0.56
R	19.35	0.76
E_1	12	0.47
E_2	20	0.79



Threaded Connection Solder Connection



UL Tryck/Temperatur

