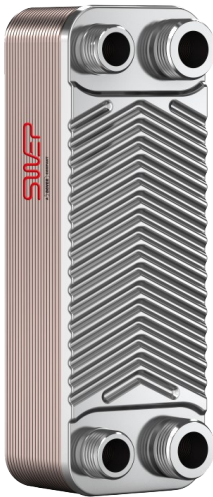
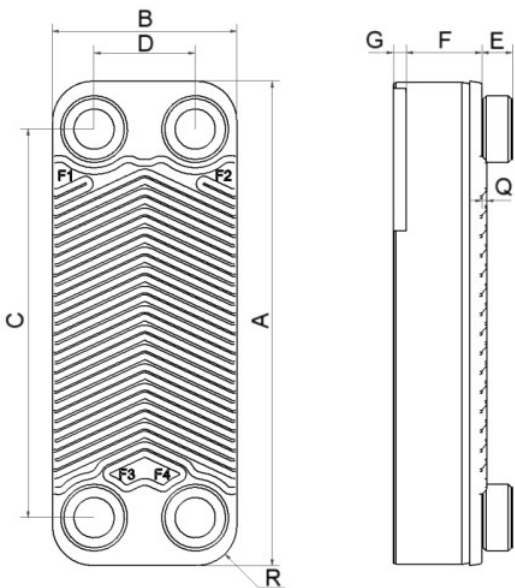


# SWEP E6T

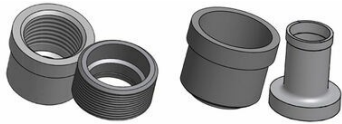
The versatile and very compact E6T delivers improved heat transfer for the majority of wall-hung, non-condensing boiler applications. The E6T has an All-Active plate pack with front and back plates that give mechanical stability while remaining active heat transfer plates. This enables the E6T to transfer more heat using less material.



Maximum number of plates (NoP)	40
Max flow	4 m³/h (17.61 gpm)
Channel volume	0.026/0.026 dm³ (0.0009/0.0009 ft³)
Material	316/316L stainless steel plates, copper brazing
Weight excl. connections	0.29+(0.047*NoP) kg 0.64+(0.104*NoP) lb
Max Particle Size (mm)	1



#	MM	IN
A	210	8.27
B	73	2.87
C	172	6.77
D	40	1.57
F	2,00+(2,24*(NoP-2,00))	0.08 (NaN*(NoP-0.08))
G	7	0.28
Q	2	0.08
R	16	0.63
E_1	12	0.47
E_2	20	0.79



Threaded Connection   Solder Connection

