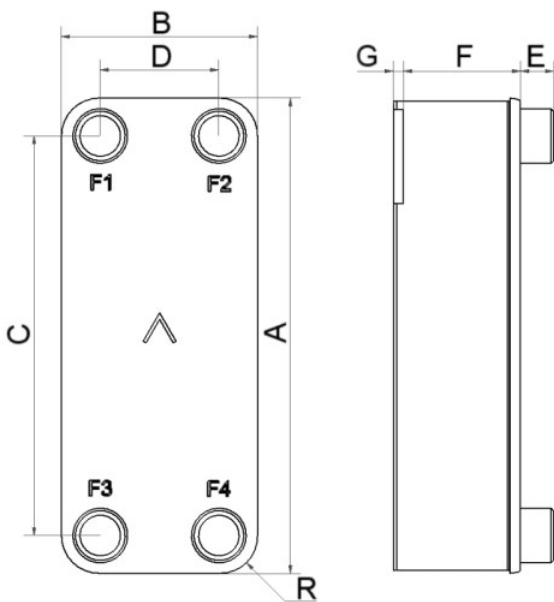


SWEP V10T

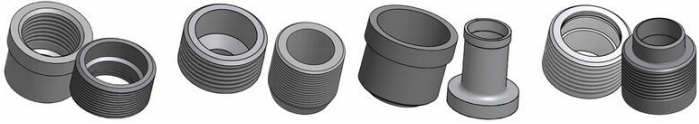
The V10T is our smallest evaporator. It delivers excellent heat transfer in many cooling applications, and replaces traditional technologies such as tube-in-tube and coaxial heat exchangers. The versatile V10T operates efficiently with all modern refrigerants.



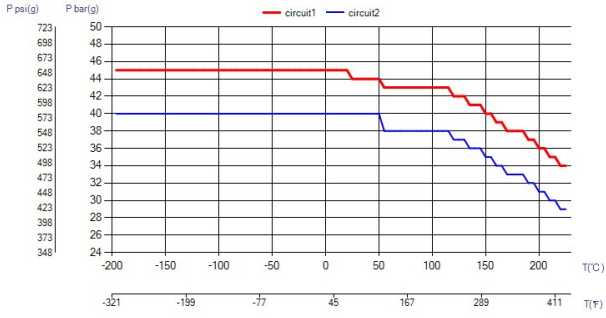
Maximum number of plates (NoP)	140
Max flow	9 m ³ /h (39.63 gpm)
Channel volume	0.061/0.061 dm ³ (0.0022/0.0022 ft ³)
Material	316/316L stainless steel plates, copper brazing
Weight excl. connections	1.15+(0.12*NoP) kg 2.54+(0.265*NoP) lb
Max Particle Size (mm)	1



#	MM	IN
A	289	11.38
B	119	4.69
C	243	9.57
D	72	2.83
F	4,00+2,24*(NoP)	0.16+0.09 *(NoP)
G	6	0.24
R	22	0.87
E_1	20	0.79
E_2	45	1.77



Threaded Connection Threaded Ultra High Approved Solder Connection Combo Connection



UL Tryck/Temperatur

