

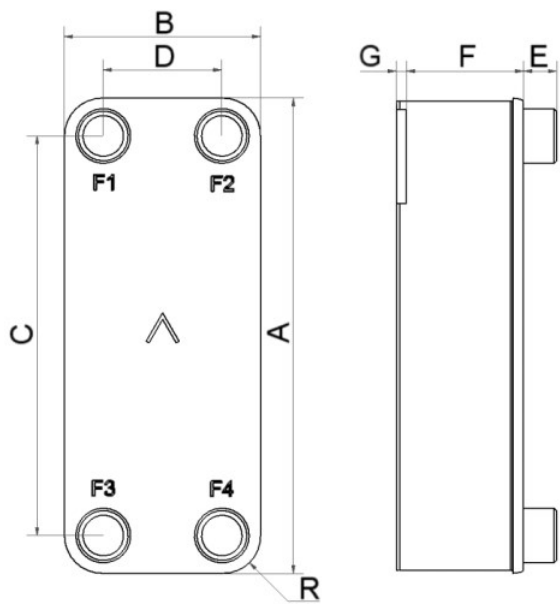


SWEP B86

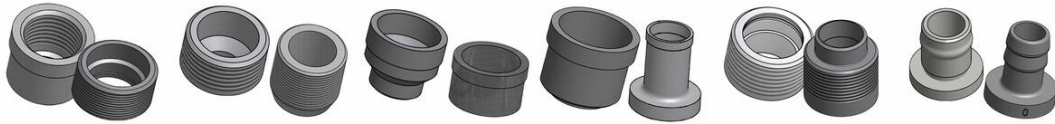
The B86 is a highly efficient heat exchanger with higher thermal length than previous generations. It is a perfect choice for high efficient tap water heating and premium condenser applications and offers an optimized heat transfer and reduced hold up volume.



Maximum number of plates (NoP)	160
Max flow	9 m³/h (39.63 gpm)
Channel volume	0.078/0.078 dm³ (0.0028/0.0028 ft³)
Material	316/316L stainless steel plates, copper brazing
Weight excl. connections	2.09+(0.1367*NoP) kg 4.60+(0.301*NoP) lb
Max Particle Size (mm)	0.7



#	MM	IN
A	526	20.71
B	119	4.69
C	470	18.5
D	63	2.48
F	4,00+1,68*(NoP)	0.16+0.07 *(NoP)
G	6	0.24
R	23	0.91
E_1	20	0.79
E_2	45	1.77
E_3	27	1.06



Threaded Connection Threaded Ultra High Approved Victaulic Connection Solder Connection Combo Connection Hose Connection

