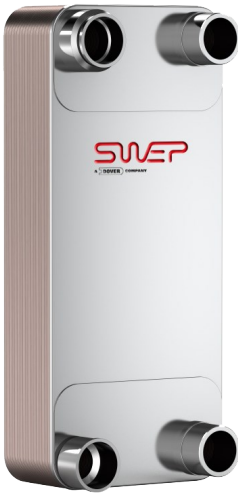


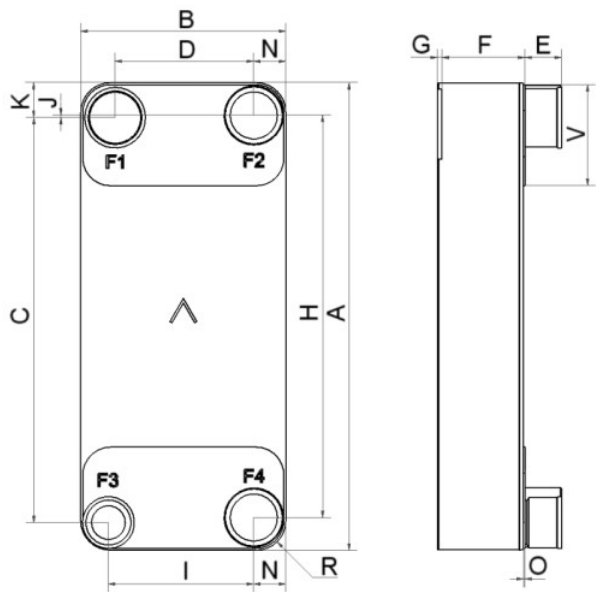
I

SWEP F400T

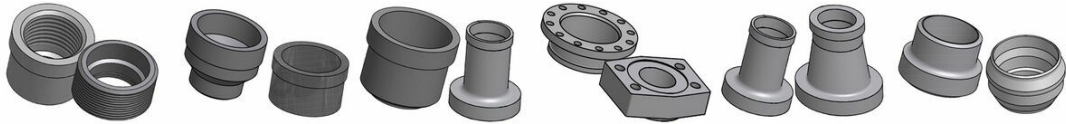
The F400T is an evaporator for high-efficiency chillers. Other applications include heat pumps, refrigeration, and industrial chillers. It delivers very high performance within its capacity range. It combines compactness with an optimized plate pattern design in a highly efficient heat exchanger with a long thermal length.



Maximum number of plates (NoP)	280
Max flow	83 m³/h (365.44 gpm)
Channel volume	0.403/0.403 dm³ (0.0142/0.0142 ft³)
Material	316/316L stainless steel plates, copper brazing
Weight excl. connections	15.43+(0.7*NoP) kg 34.02+(1.543*NoP) lb
Max Particle Size (mm)	1



#	MM	IN
A	694	27.32
B	304	11.97
C	601	23.66
D	205.50	8.09
F	18,00+2,29*(NoP)	0.71+0.09 *(NoP)
G	0	0
H	597	23.5
I	215.50	8.48
J	3.50	0.14
K	52	2.05
N	47.50	1.87
O	2	0.08
R	44	1.73
V	150	5.91
E_1	54	2.13



Threaded Connection Victaulic Connection Solder Connection Flange Connection Solder Coned Connection Weld Connection

