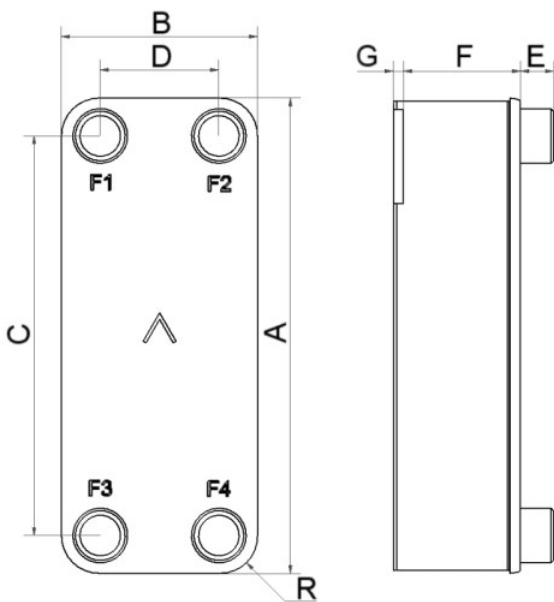


SWEP B320LT

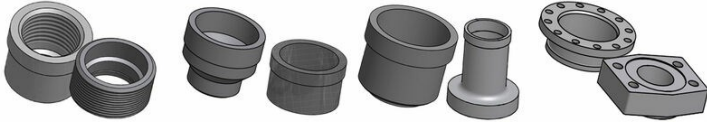
The B320LT envelope offers efficient solutions in many demanding applications, such as district heating, oil coolers and different industrial applications. This product is part of SWEPs range for larger capacities which offers a flexible thermal length through optimizing the plate arrangement which provides a great application fit combining high thermal efficiency and expanded capacity reach.



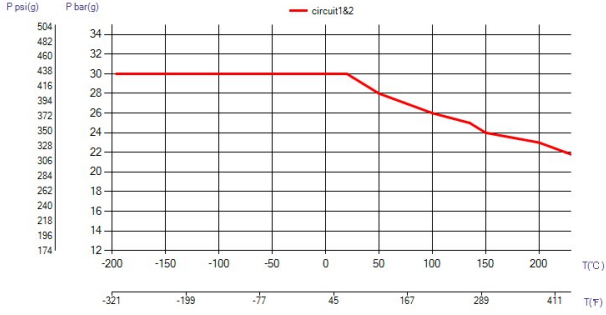
Maximum number of plates (NoP)	260
Max flow	76.2 m ³ /h (335.50 gpm)
Channel volume	0.26/0.26 dm ³ (0.0092/0.0092 ft ³)
Material	316/316L stainless steel plates, copper brazing
Weight excl. connections	9.43+(0.432*NoP) kg 20.80+(0.952*NoP) lb
Max Particle Size (mm)	1.1



#	MM	IN
A	525	20.67
B	243	9.57
C	430	16.93
D	148	5.83
F	10,00+2,57*(NoP)	0.39+0.1 *(NoP)
G	4	0.16
R	48	1.89
E_1	54	2.13
E_2	20	0.79
E_3	30	1.18



Threaded Connection Victaulic Connection Solder Connection Flange Connection



UL Tryck/Temperatur

