

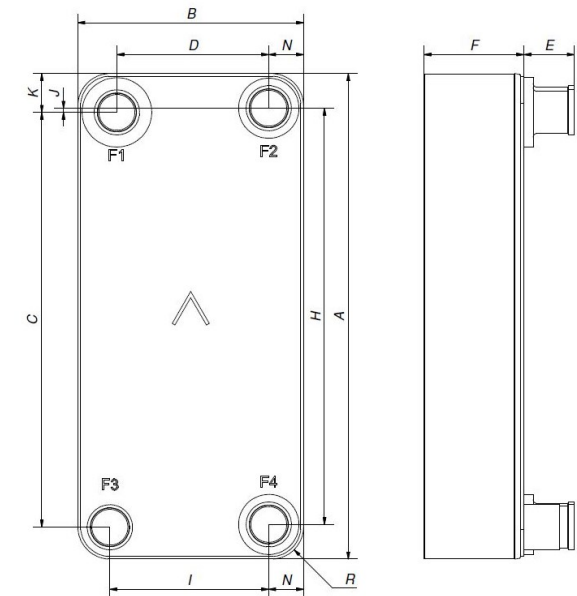
I

# SWEP B200T

The B200T is a condenser operating across a wide capacity interval. The product is perfect for solutions that require compactness and efficiency, and is an effective alternative to shell-and-tube exchangers.



Maximum number of plates (NoP)	250
Max flow	43.7 m³/h (192.41 gpm)
Channel volume	0.241/0.241 dm³ (0.0085/0.0085 ft³)
Material	316/316L stainless steel plates, copper brazing
Weight excl. connections	9.45+(0.4*NoP) kg 20.84+(0.882*NoP) lb
Max Particle Size (mm)	1



#	MM	IN
A	525	20.67
B	243	9.57
C	448.5	17.66
D	163.5	6.44
F	10+2.29*(NoP)	0.39+0.09 *(NoP)
G	4	0.16
H	450	17.72
I	171	6.73
J	4.5	0.18
K	42	1.65
N	37.5	1.48
R	35	1.38
E_1	54	2.13
E_2	27	1.06



Threaded Connection    Victaulic Connection    Solder Connection    Combo Connection    Flange Connection    Weld Connection

