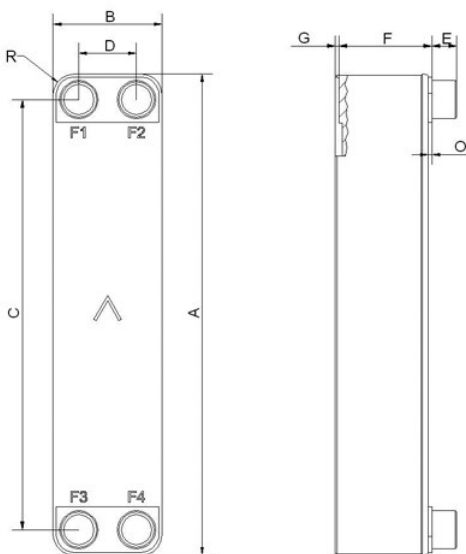


SWEP QB80S - All Stainless

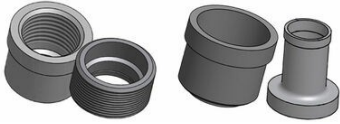


SWEP All-Stainless™ products are developed for systems demanding 100% stainless steel components, and for high temperature applications. They can be used with fluids that are corrosive to copper such as ammonia and biogas or for sensitive applications where copper and nickel contamination must be avoided such as oil, DI water and pharmaceutical applications. SWEP's unique process technology enables a compact product with minimal material usage relative to its mechanical strength. The fully integrated Q-pipe distribution system is optimized for high-efficiency evaporation and is the most efficient and versatile in the market. The QB80S is available in a wide number of plate sizes.

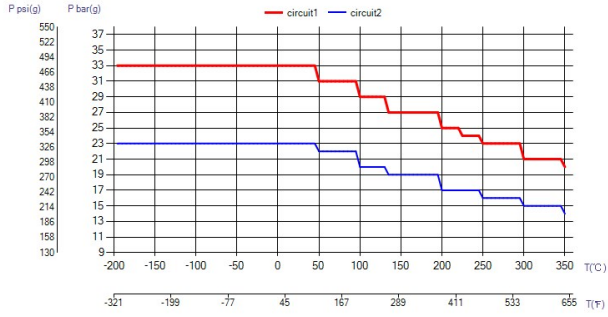
Maximum number of plates (NoP)	90
Max flow	17 m³/h (74.85 gpm)
Channel volume	0.107/0.107 dm³ (0.0038/0.0038 ft³)
Material	316 Stainless Steel Plates, Stainless Steel Brazing
Weight excl. connections	2.10+(0.231*NoP) kg 4.64+(0.509*NoP) lb
Max Particle Size (mm)	1



#	MM	IN
A	526	20.71
B	119	4.69
C	470	18.5
D	63	2.48
F	4,00+2,39*(NoP)	0.16+0.09 *(NoP)
G	6	0.24
R	23	0.91
E_1	27	1.06



Threaded Connection Solder Connection



UL Tryck/Temperatur

