

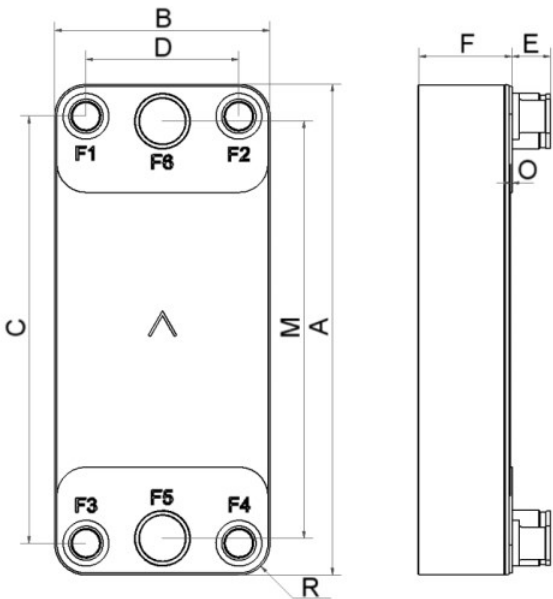


SWEP DFXD400

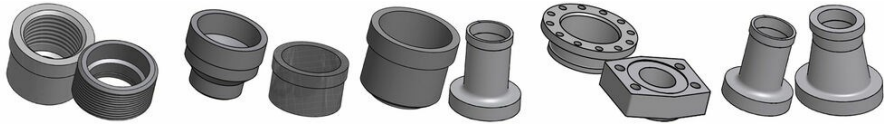
The DFX400 is a highly effective, versatile True Dual that is a natural choice for high-efficiency chillers and climate control applications. Optimized as a high-performance evaporator, its advantage is its ability to offer full performance at both full and half load.



Maximum number of plates (NoP)	282
Max flow	76 m³/h (334.62 gpm)
Channel volume	0.406/0.421 dm³ (0.0143/0.0149 ft³)
Material	316/316L stainless steel plates, copper brazing
Weight excl. connections	11.60+(0.63*NoP) kg 25.57+(1.389*NoP) lb
Max Particle Size (mm)	1



#	MM	IN
A	694	27.32
B	304	11.97
C	604	23.78
D	216	8.5
F	12,00+2,39*(NoP)	0.47+0.09 *(NoP)
G	1.50	0.06
M	590	23.23
O	2	0.08
R	44	1.73
E_1	54	2.13
E_2	27	1.06



Threaded Connection Victaulic Connection Solder Connection Flange Connection Solder Coned Connection

