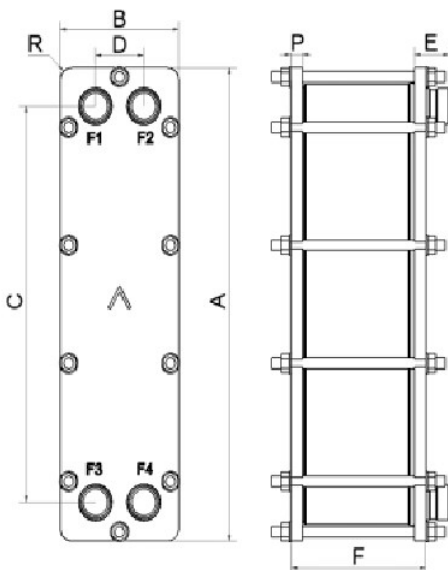


SWEP BDW16DW

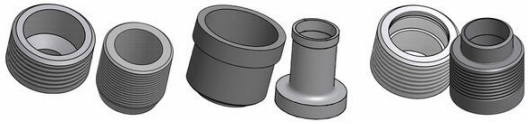
This double-wall product is designed for applications requiring high thermal efficiency, minimal leakage, and improved leak detection. The design offers the same compactness and thermal performance as other SWEP BPHEs.



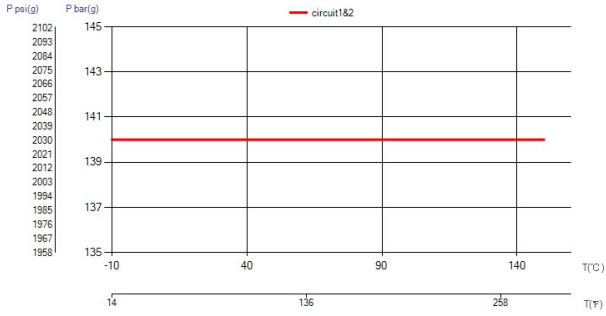
Maximum number of plates (NoP)	140
Max flow	11.3 m ³ /h (49.75 gpm)
Channel volume	0.061/0.061 dm ³ (0.0022/0.0022 ft ³)
Material	316/316L stainless steel plates, copper brazing
Weight excl. connections	54.80+(0.22*NoP) kg 120.82+(0.485*NoP) lb
Max Particle Size (mm)	0.8



#	MM	IN
A	417	16.42
B	159.50	6.28
C	329	12.95
D	72	2.83
F	90,00+2,01*(NoP)	3.54+0.08 *(NoP)
P	39	1.54
R	22	0.87
E_1	81	3.19



Threaded Ultra High Approved Solder Connection Combo Connection



UL Tryck/Temperatur

