

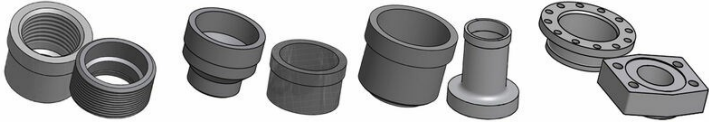
SWEP BDW35TDW

The B35TDW targets applications such as boilers for tap water heating, transformer oil cooling, chiller and refrigeration desuperheaters, and heat recovery from air compressors. SWEP's Double Wall technology ensures that liquids do not mix and makes any internal leaks visible – important factors in applications where safety is a priority.

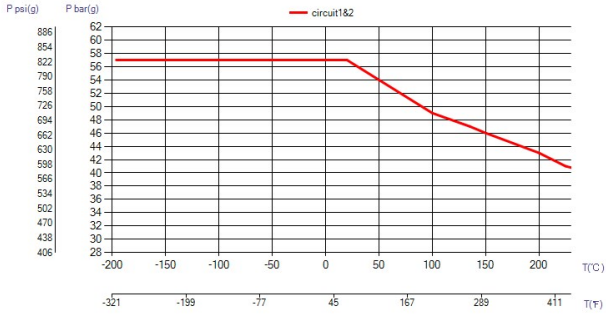


Maximum number of plates (NoP)	260
Max flow	58 m ³ /h (255.37 gpm)
Channel volume	0.18/0.18 dm ³ (0.0064/0.0064 ft ³)
Material	316/316L stainless steel plates, copper brazing
Weight excl. connections	12.29+(0.494*NoP) kg 27.09+(1.089*NoP) lb
Max Particle Size (mm)	1

#	MM	IN
A	393	15.47
B	243	9.57
C	309	12.17
D	159	6.26
F	18,00+2,53*(NoP)	0.71+0.1 *(NoP)
G	0	0
R	35	1.38
E_1	27	1.06
E_2	54	2.13



Threaded Connection Victaulic Connection Solder Connection Flange Connection



UL Tryck/Temperatur

