

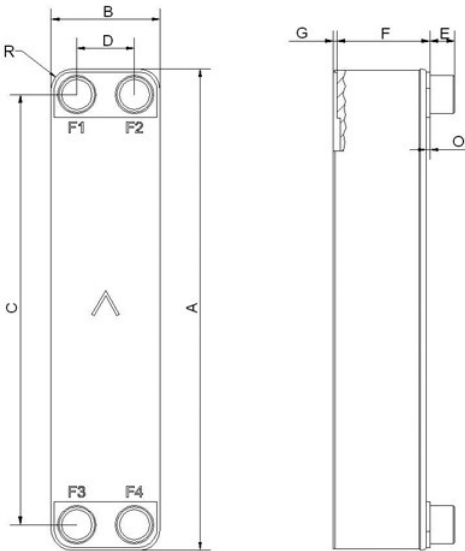


# SWEP B80AS

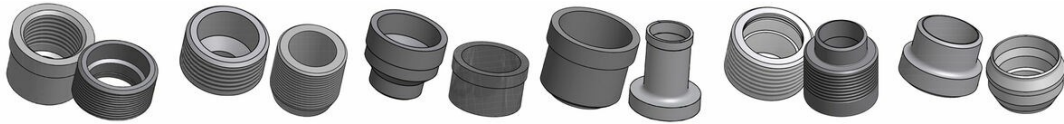
The B80AS is built on the successful 80 platform and adds the advantages of our patented AsyMatrix® technology to deliver increased thermal performance and reduced pressure drop. The B80AS shares the same physical aspects of the current B80, enabling it to be used as a drop-in improvement in existing systems. Target applications for the B80AS are in heat pump and chiller installations, and in transmission oil cooling and heating.



Maximum number of plates (NoP)	140
Max flow	17 m³/h (74.85 gpm)
Channel volume	0.1/0.122 dm³ (0.0035/0.0043 ft³)
Material	316/316L stainless steel plates, copper brazing
Weight excl. connections	2.09+(0.164*NoP) kg 4.61+(0.362*NoP) lb
Max Particle Size (mm)	1



#	MM	IN
A	526	20.71
B	119	4.69
C	470	18.5
D	63	2.48
F	4,00+2,24*(NoP)	0.16+0.09 *(NoP)
G	6	0.24
R	23	0.91
E_1	27	1.06
E_2	45	1.77



Threaded Connection   Threaded Ultra High Approved   Victaulic Connection   Solder Connection   Combo Connection   Weld Connection

