

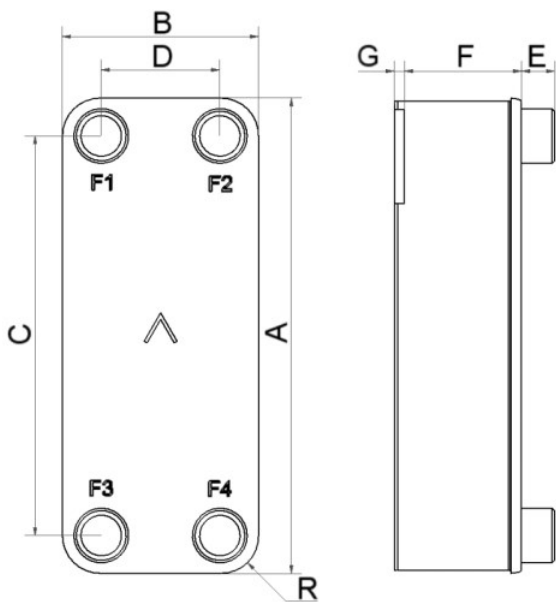


SWEP B5T - All Stainless

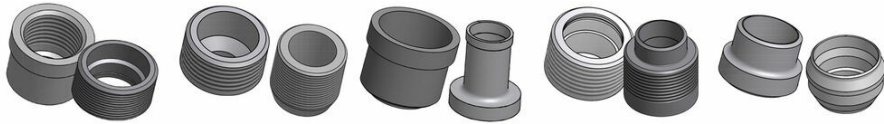
SWEP All-Stainless™ products are developed for systems demanding 100% stainless steel components, and for high temperature applications. They can be used with fluids that are corrosive to copper such as ammonia and biogas or for sensitive applications where copper and nickel contamination must be avoided such as oil, DI water and pharmaceutical applications. SWEP's unique process technology enables a compact product with minimal material usage relative to its mechanical strength. The B5T enables efficient heat exchange in applications with small flows and extreme demands for compactness. Easy to install and use, the product is small yet versatile, which makes it a good choice for small oil or water coolers.



Maximum number of plates (NoP)	60
Max flow	4 m³/h (17.61 gpm)
Channel volume	0.024/0.024 dm³ (0.0008/0.0008 ft³)
Material	316 Stainless Steel Plates, Stainless Steel Brazing
Weight excl. connections	0.40+(0.0447*NoP) kg 0.88+(0.099*NoP) lb
Max Particle Size (mm)	1



#	MM	IN
A	192.80	7.59
B	75.40	2.97
C	154	6.06
D	40	1.57
F	3,00+2,30*(NoP)	0.12+0.09 *(NoP)
G	7.40	0.29
R	17.70	0.7
E_1	20	0.79



Threaded Connection Threaded Ultra High Approved Solder Connection Combo Connection Weld Connection

