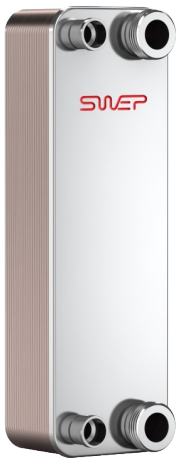


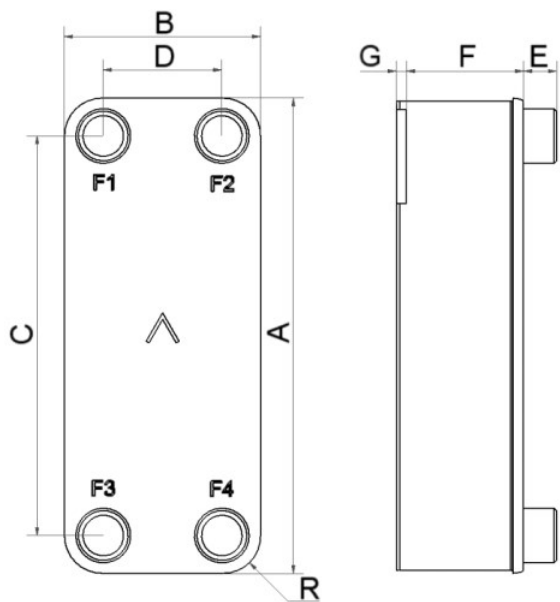


SWEP B26

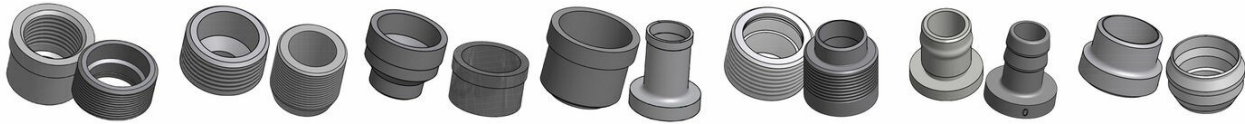
The B26 with AsyMatrix® channels is designed to be a high-performance condenser, which makes it ideal for heat pump applications. Our AsyMatrix® technology combines high heat transfer efficiency with low pressure drop, enabling system builders to make more efficient yet more compact systems. High performance combined with low internal volume and smaller than expected size makes this BPHE unique in the market and an excellent choice for numerous applications and functions.



| | |
|--------------------------------|---|
| Maximum number of plates (NoP) | 160 |
| Max flow | 11.3 m³/h (49.75 gpm) |
| Channel volume | 0.044/0.066 dm³ (0.0016/0.0023 ft³) |
| Material | 316/316L stainless steel plates, copper brazing |
| Weight excl. connections | 1.49+(0.1076*NoP) kg 3.29+(0.237*NoP) lb |
| Max Particle Size (mm) | 0.7 |



| # | MM | IN |
|-----|-----------------|------------------|
| A | 376 | 14.8 |
| B | 119 | 4.69 |
| C | 329 | 12.95 |
| D | 72 | 2.83 |
| F | 4,00+1,61*(NoP) | 0.16+0.06 *(NoP) |
| G | 6 | 0.24 |
| R | 23 | 0.91 |
| E_1 | 20 | 0.79 |
| E_2 | 45 | 1.77 |



Threaded Connection Threaded Ultra High Approved Victaulic Connection Solder Connection Combo Connection Hose Connection Weld Connection

