

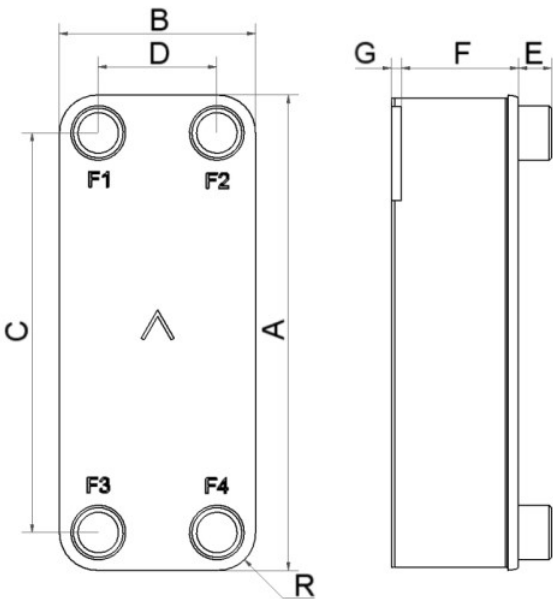


SWEP B18

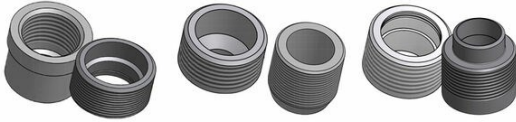
With pressure requirements for trans critical CO2 applications touching 140 bar, the B18 is the natural choice. The B18 is optimized for high heat pump capacities (up to 150kW as a gas cooler and up to 60 kW as an evaporator). The compact yet lightweight B18 is an excellent choice for cold chain applications (supermarkets, transport cooling, heat recovery, economizers), and for heat pumps (evaporator and gas cooler).



Maximum number of plates (NoP)	200
Max flow	90 m³/h (396.26 gpm)
Channel volume	610/610 dm³ (21.5419/21.5419 ft³)
Material	316/316L stainless steel plates, copper brazing
Weight excl. connections	40470.00+(2504*NoP) kg 89220.16+(5520.318*NoP) lb
Max Particle Size (mm)	0.8



#	MM	IN
A	377	14.84
B	119.50	4.7
C	329	12.95
D	72	2.83
F	12.00+2.00*(NoP)	0.47+0.08 *(NoP)
G	2	0.08
R	23.50	0.93
E_1	45	1.77
E_2	81	3.19
E_3	20	0.79



Threaded Connection Threaded Ultra High Combo Connection
Approved

