

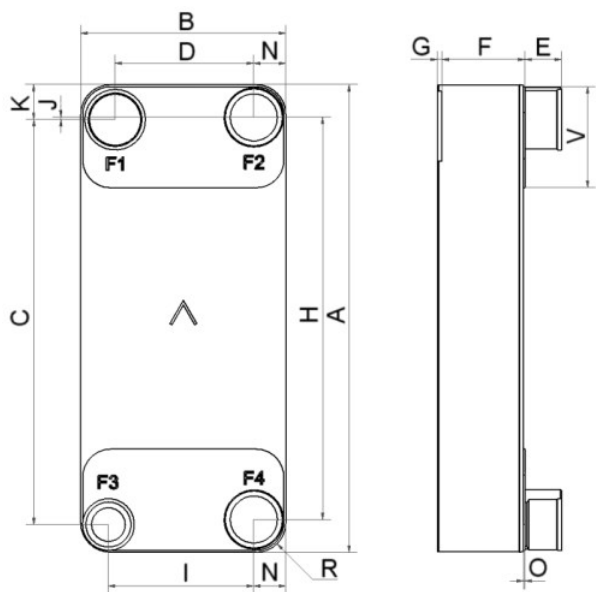
I

SWEP V400

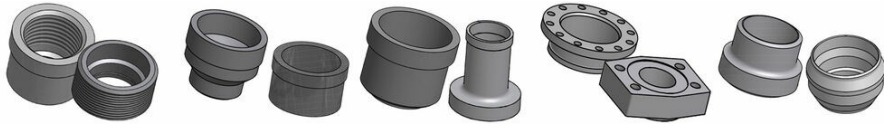
The V400 functions extremely effectively at high capacities. Its innovative design makes it an excellent choice for compact solutions in demanding chiller applications.



Maximum number of plates (NoP)	280
Max flow	166 m³/h (730.88 gpm)
Channel volume	0.806/0.806 dm³ (0.0285/0.0285 ft³)
Material	316/316L stainless steel plates, copper brazing
Weight excl. connections	29.68+(1.5*NoP) kg 65.43+(3.307*NoP) lb
Max Particle Size (mm)	1



#	MM	IN
A	694	27.32
B	304	11.97
C	601	23.66
D	207.50	8.17
F	18,00+2,34*(NoP)	0.71+0.09 *(NoP)
G	0.50	0.02
H	597	23.5
I	215.50	8.48
J	3.50	0.14
K	52	2.05
N	47.50	1.87
O	2	0.08
R	44	1.73
V	150	5.91
E_1	54	2.13



Threaded Connection Victaulic Connection Solder Connection Flange Connection Weld Connection

