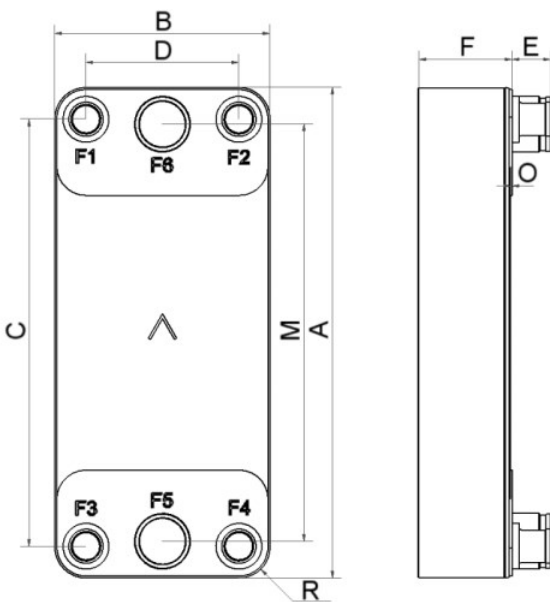


SWEP DSD400

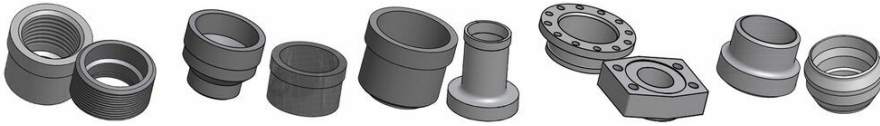
The DS400 is a highly effective, versatile True Dual evaporator which is the perfect choice for flexible chillers and climate control applications. Its advantage is its ability to deliver full performance at both full and half load.



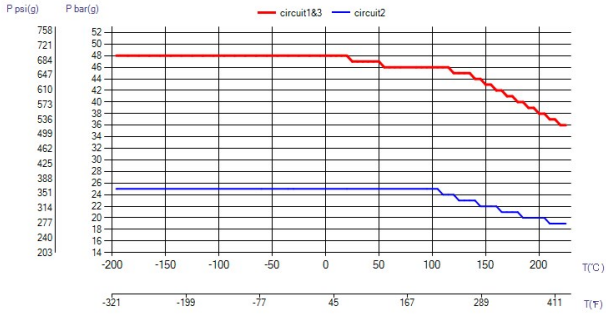
Maximum number of plates (NoP)	282
Max flow	76 m ³ /h (334.62 gpm)
Channel volume	0.406/0.421 dm ³ (0.0143/0.0149 ft ³)
Material	316/316L stainless steel plates, copper brazing
Weight excl. connections	11.60+(0.65*NoP) kg 25.57+(1.433*NoP) lb
Max Particle Size (mm)	1



#	MM	IN
A	694	27.32
B	304	11.97
C	604	23.78
D	216	8.5
F	12,00+2,39*(NoP)	0.47+0.09 *(NoP)
G	1.50	0.06
M	590	23.23
O	2	0.08
R	44	1.73
E_1	54	2.13
E_2	27	1.06



Threaded Connection Victaulic Connection Solder Connection Flange Connection Weld Connection



UL Tryck/Temperatur

