

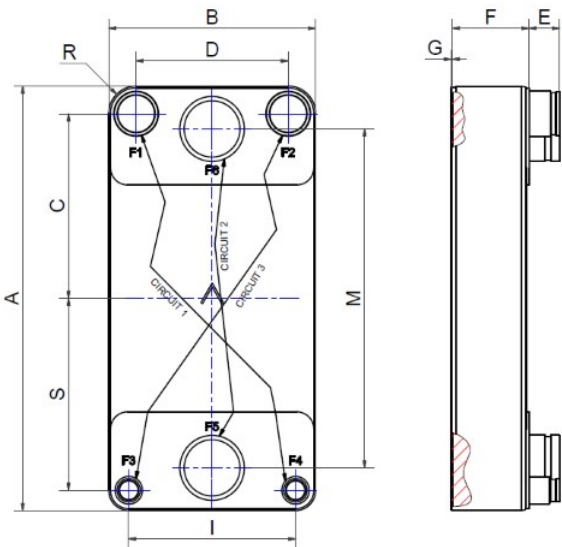
I

SWEP DFXD650

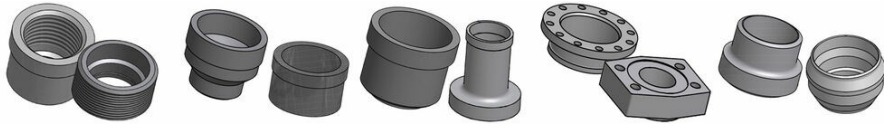
The DFX650 is a highly effective, versatile true dual that is a natural choice as evaporator for chiller- and heat pump applications. DFX650 offer maximum performance for applications targeting low to medium temperature approach. The true dual design means excellent performance at both full and partial load. The product is approved for pressures of up to 61 bar (885 psi), so it can be used with the majority of current high-pressure refrigerants, enabling our customers to use the compressor’s whole envelope.



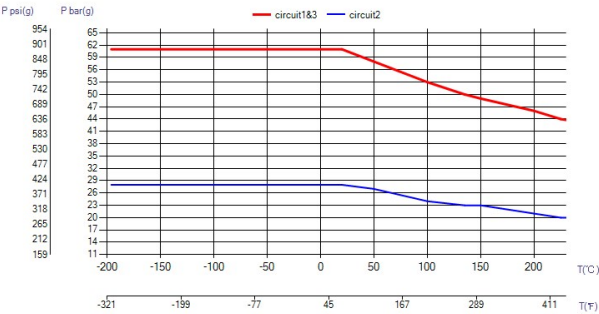
Maximum number of plates (NoP)	346
Max flow	140 m³/h (616.40 gpm)
Channel volume	0.496/0.585 dm³ (0.0175/0.0207 ft³)
Material	316/316L stainless steel plates, copper brazing
Weight excl. connections	14.59+(0.9533*NoP) kg 32.16+(2.102*NoP) lb
Max Particle Size (mm)	1



#	MM	IN
A	744.60	29.31
B	365.60	14.39
C	324	12.76
D	269	10.59
F	14,00+2,43*(NoP)	0.55+0.1 *(NoP)
G	2	0.08
I	295	11.61
M	595	23.43
R	34	1.34
S	337	13.27
E_1	54	2.13



Threaded Connection Victaulic Connection Solder Connection Flange Connection Weld Connection



UL Tryck/Temperatur

