

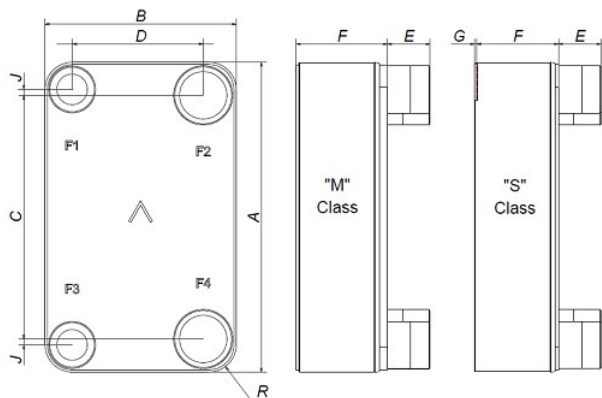
I

# SWEP B35T

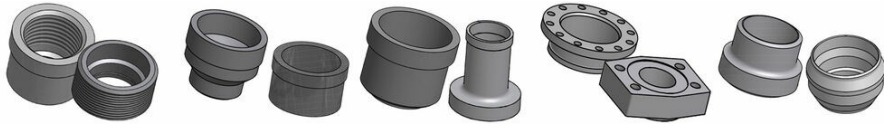
The B35T is ideal for many applications in district heating, heat recovery for industry, HVAC, combined heat & power and engine oil cooling. It is the perfect choice for efficient heat transfer with a low pressure drop in systems with up to 2½" piping and 58 m³/h (255 gpm) water flow.



Maximum number of plates (NoP)	260
Max flow	27 m³/h (118.88 gpm)
Channel volume	0.18/0.18 dm³ (0.0064/0.0064 ft³)
Material	316/316L stainless steel plates, copper brazing
Weight excl. connections	15.76+(0.256*NoP) kg 34.73+(0.564*NoP) lb
Max Particle Size (mm)	1



#	MM	IN
A	393	15.47
B	243	9.57
C	324	12.76
D	174	6.85
F	22,00+2,26*(NoP)	0.87+0.09 *(NoP)
G	0	0
R	35	1.38
E_1	27	1.06
E_2	54	2.13



Threaded Connection    Victaulic Connection    Solder Connection    Flange Connection    Weld Connection

