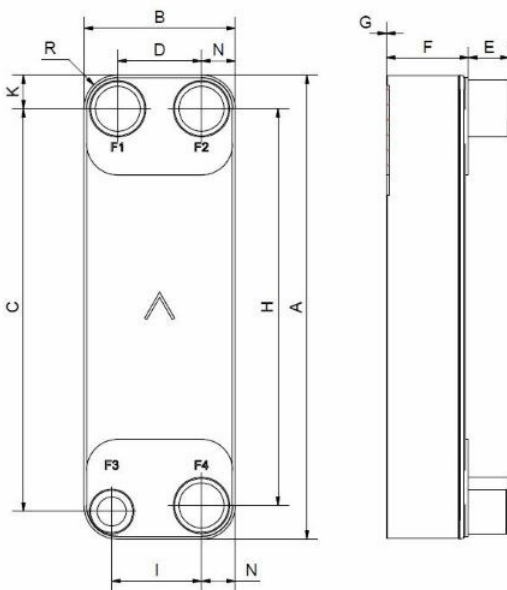


# SWEP F250AS

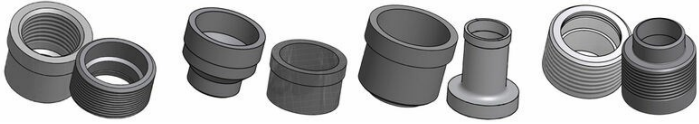
Our F250AS is a high-efficiency single-circuit evaporator, specially developed for air- and water-cooled reversible chiller applications. Its large ports and asymmetric plate design deliver an effective operating range of 80-250 kW. Our AsyMatrix® plate pattern improves heat transfer while reducing water pressure drop and refrigerant charge.



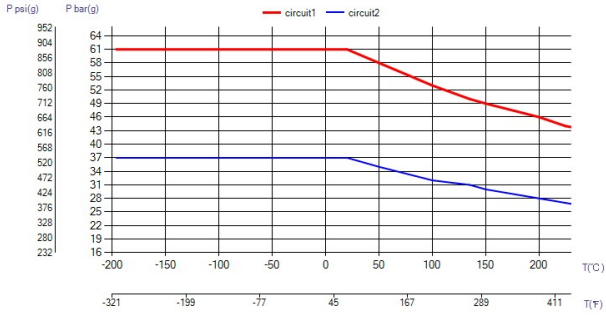
<b>Maximum number of plates (NoP)</b>	250
<b>Max flow</b>	62 m <sup>3</sup> /h (272.98 gpm)
<b>Channel volume</b>	0.172/0.202 dm <sup>3</sup> (0.0061/0.0071 ft <sup>3</sup> )
<b>Material</b>	316 Stainless Steel Plates, Cover Plates in 304 Stainless Steel, Copper Brazing
<b>Weight excl. connections</b>	8.40+(0.3495*NoP) kg 18.52+(0.771*NoP) lb
<b>Max Particle Size (mm)</b>	0.8



#	MM	IN
A	620	24.41
B	202	7.95
C	538	21.18
D	112	4.41
F	14,00+1,91*(NoP)	0.55+0.08 *(NoP)
G	0	0
H	530	20.87
I	120	4.72
K	45	1.77
N	45	1.77
R	45	1.77
E_1	27	1.06
E_2	54	2.13



Threaded Connection Victaulic Connection Solder Connection Combo Connection



## UL Tryck/Temperatur

