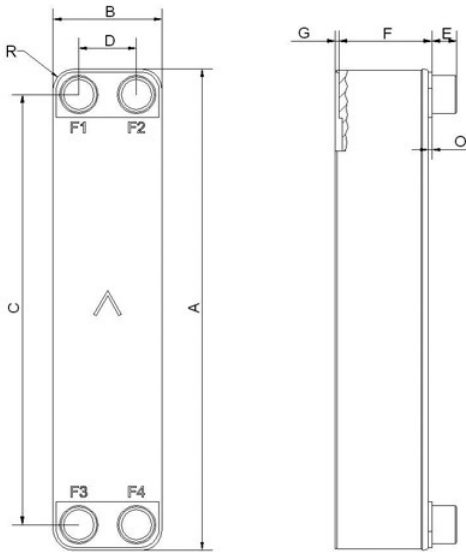


SWEP QA80AS

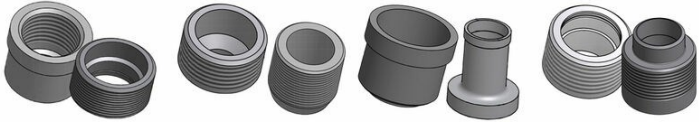
The QA80AS heat pump evaporator combines the successful 80 platform with the advantages of our patented AsyMatrix® technology, delivering increased thermal performance and reduced pressure drop. The fully integrated Q-pipe distribution system is optimized for high-efficiency heat pumps and is the most efficient and versatile in the market. The QA80AS is available in a wide number of plate sizes.



Maximum number of plates (NoP)	80
Max flow	17 m³/h (74.85 gpm)
Channel volume	0.1/0.122 dm³ (0.0035/0.0043 ft³)
Material	316/316L stainless steel plates, copper brazing
Weight excl. connections	2.10+(0.17*NoP) kg 4.64+(0.375*NoP) lb
Max Particle Size (mm)	1



#	MM	IN
A	526	20.71
B	119	4.69
C	470	18.5
D	63	2.48
F	4+2.24*(NoP)	0.16+0.09 *(NoP)
G	6	0.24
R	23	0.91
E_1	27	1.06
E_2	45	1.77



Threaded Connection Threaded Ultra High Approved Solder Connection Combo Connection

