

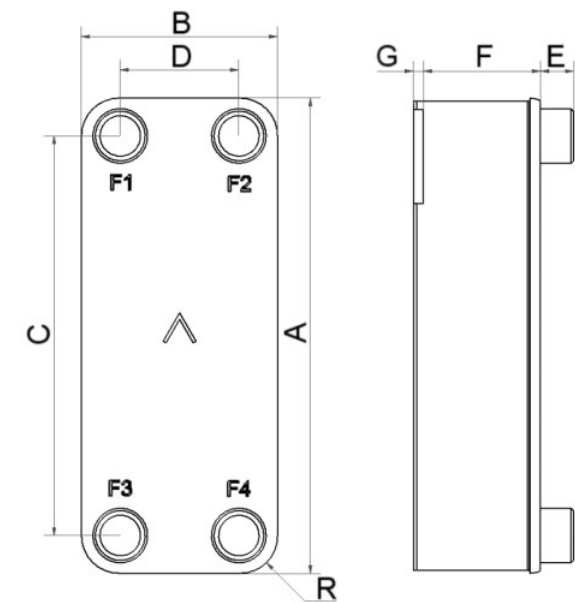
I

SWEP B25T

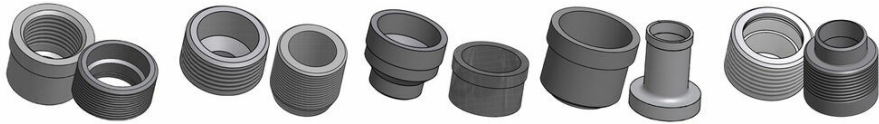
The B25T delivers efficient heat exchange solutions across a wide capacity interval. The product’s versatility and excellent heat transfer make it excellent for demanding water-to-water applications and as a high-performance condenser.



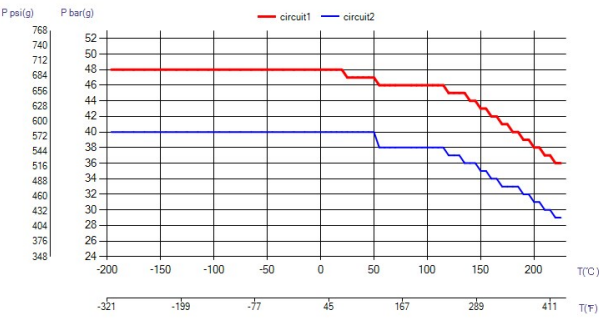
Maximum number of plates (NoP)	140
Max flow	9 m³/h (39.63 gpm)
Channel volume	0.111/0.111 dm³ (0.0039/0.0039 ft³)
Material	304 Stainless Steel Plates, Copper Brazing
Weight excl. connections	2.13+(0.1775*NoP) kg 4.69+(0.391*NoP) lb
Max Particle Size (mm)	1



#	MM	IN
A	526	20.71
B	119	4.69
C	479	18.86
D	72	2.83
F	4,00+2,25*(NoP)	0.16+0.09 *(NoP)
G	6	0.24
R	23	0.91
E_1	20	0.79
E_2	45	1.77



Threaded Connection Threaded Ultra High Approved Victaulic Connection Solder Connection Combo Connection



UL Tryck/Temperatur

