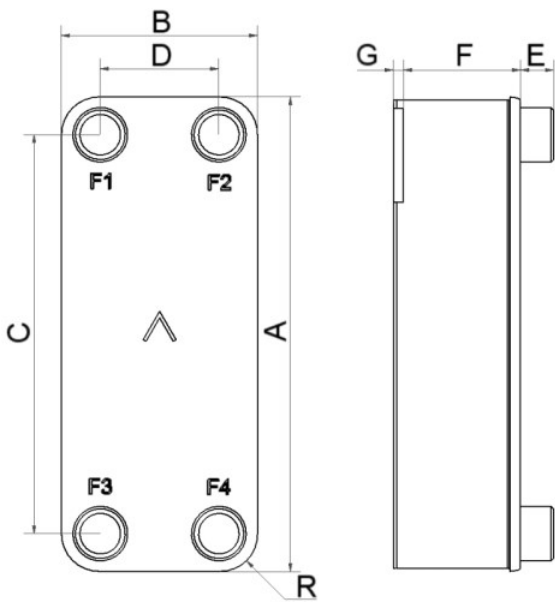


SWEP B500T

B500T è progettato per un funzionamento efficiente come condensatore ad alta capacità in sistemi come refrigeratori modulari e pompe di calore industriali.



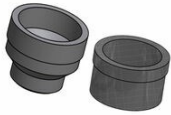
m³/h



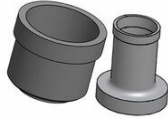
#	MM	IN
	979	38.54
	304	11.97
	854	33.62
	179	7.05
	12,00+2,29*(NoP)	0.47+0.09 *(NoP)
	6	0.24
	44	1.73
	54	2.13
	27	1.06



Connessione a filettare



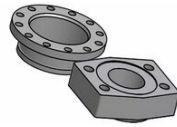
Victaulic



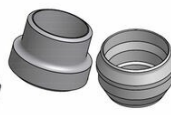
Connessione a saldare/ brasare



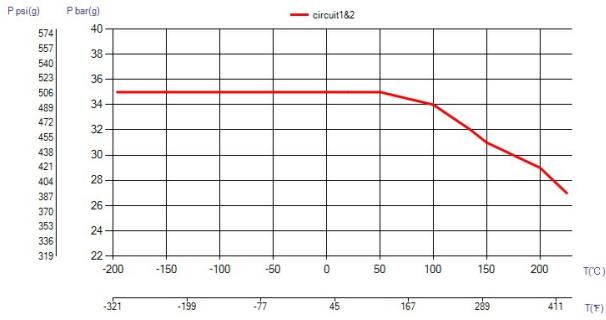
Connessione combinata



Connessione flangiata



Connessione a saldare



UL Tryck/Temperatur

