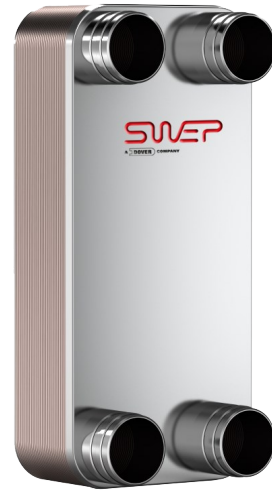
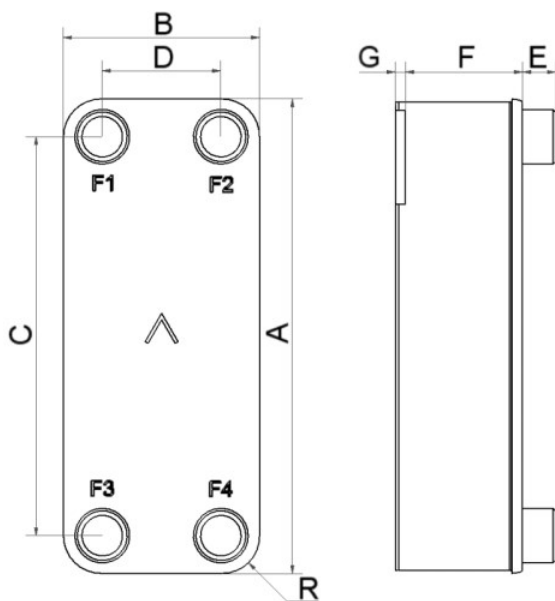


SWEP B56

B56 è stato adattato per offrire un trasferimento del calore efficiente nelle applicazioni industriali e di riscaldamento. Grazie alla tecnologia brevettata AsyMatrix®, il prodotto è versatile per il teleriscaldamento domestico e le applicazioni di refrigerazione dell'olio.



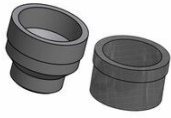
m³/h



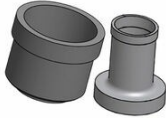
#	MM	IN
	525	20.67
	243	9.57
	430	16.93
	148	5.83
	14,00+2,44*(NoP)	0.55+0.1 *(NoP)
	2.50	0.1
	48	1.89
	54	2.13
	81	3.19



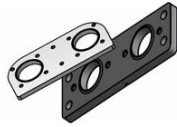
Connessione a filettare



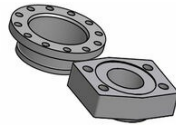
Victaulic



Connessione a saldare/ brasare



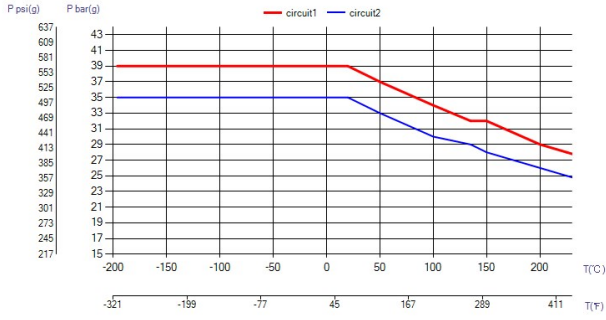
Piastra di connessione



Connessione flangiata



Connessione a saldare



UL Tryck/Temperatur

